

LIBRARY
ROYAL AIRCRAFT ESTABLISHMENT
BEDFORD.

R. & M. No. 3075
(18,941)
A.R.C. Technical Report



MINISTRY OF SUPPLY

AERONAUTICAL RESEARCH COUNCIL
REPORTS AND MEMORANDA

Operational Formulae for Response Calculations

By

S. NEUMARK, Techn.Sc.D., F.R.Ae.S.

© Crown copyright 1958

LONDON: HER MAJESTY'S STATIONERY OFFICE

1958

PRICE 17s. 0d. NET

Operational Formulae for Response Calculations

By

S. NEUMARK, Techn.Sc.D., F.R.Ae.S.

COMMUNICATED BY THE DIRECTOR-GENERAL OF SCIENTIFIC RESEARCH (AIR),
MINISTRY OF SUPPLY

*Reports and Memoranda No. 3075**

June, 1956

Summary.—The paper presents systematic tables of formulae whose purpose is to facilitate the operational solution of response problems reducible to linear differential equations with constant coefficients and with simple forcing functions. The formulae enable the user to find operational equivalents of a wide class of simple functions and, inversely, to find functional equivalents of a great number of operational expressions, in the most rapid and direct manner. In such a way, it is possible to reduce to a minimum the usual heavy algebraical work involved in response calculations. The tables include only such functions whose operational equivalents are algebraic fractions, but these cover a wide field of practical applications. Operational fractions of the 1st, 2nd, 3rd and 4th order are treated in a comprehensive way, so that all possible particular cases are included. Additional tables make it possible to reduce every fraction of 5th or 6th order to a combination of fractions of lower order.

The introductory text describes the method of deriving the formulae and explains how to use them in solving response problems. A number of examples are appended which show the advantages of the tables and give solutions of several typical problems.

1. *Introduction.*—Response calculations for mechanical, electrical and processing systems, with various sorts of controls, have become indispensable in many branches of engineering. They appear prominently in the modern theory of control and servo-mechanisms. In aeronautics, response problems made their appearance almost immediately after the fundamentals of aircraft dynamic stability had been established. Now, such problems become increasingly important, and more and more complicated cases must be dealt with, to enable us to understand and assess handling properties and structural loadings of aircraft.

The complexity of problems, often involving large numbers of elements and degrees of freedom and also various kinds of non-linearities, has led to a rapid development of differential analysers and simulators. The old analytical methods may seem inadequate or obsolete. There remains, however, a multitude of problems of great practical importance, which are definitely suitable for analytical treatment, and for which the use of costly analogue computers is neither justified nor indeed the most appropriate. This applies especially to linear problems (strictly: problems leading to linear differential equations with constant coefficients, of not very high order). Such problems often admit of comparatively concise and elegant analytical solutions which, if properly handled, may yield simple practical rules and criteria.

The usual analytical method for linear problems is the operational calculus. The advantages of operational treatment have been best described by H. Jeffreys²: 'The operational method will give the answer in a page when ordinary methods take five pages; also, it gives the correct answer when the ordinary methods, through human fallibility, are liable to give a wrong one'. Nevertheless, even the operational method, when applied to anything above the level of simple textbook

* R.A.E. Report Aero. 2570, received 18th March, 1957.

It is easily seen that the above rules lead immediately to all formulae of the fundamental Table 1. Thus, for instance, each of the formulae (2 to 7) is obtained by applying the rule (e) to the preceding formula. Formulae (8 to 14) are derived from (1 to 7) by applying the rule (b) in each case but, alternatively, the rule (a) may be used to derive (9) from (8), (10) from (9), etc.

Formulae (15 to 22) have been obtained from (1 to 4) by applying the rule (c), and in each case a single operation yields two formulae at one stroke. For example, applying the rule (c) to (2), we find that the operational equivalent of $\tau(\cos J\tau + i \sin J\tau)$ is:

$$\frac{D}{D - iJ} \frac{1}{D - iJ} = \frac{D(D + iJ)^2}{(D^2 + J^2)^2} = \frac{D(D^2 - J^2) + 2iJD^2}{(D^2 + J^2)^2}$$

and, separating the real and imaginary parts, we get (16) and (20) at once. Alternatively, (16) may be obtained from (15) by applying the rule (a), and so on.

Finally, the formulae (23 to 30) have been derived from (15 to 22) respectively, by applying the rule (b), but alternative derivations by means of the rules (a) and (c) are available for checking.

Each group of formulae in Table 1 may, of course, be extended indefinitely, introducing higher powers of τ . The formulae given are, however, more than sufficient for all ordinary purposes and for deriving the subsequent tables.

By inspecting Table 1 it is seen that the operational equivalents of all simple functions of the type considered are algebraical fractions in D , the denominator being in each case an appropriate power of one of the factors D , $D + R$, $D^2 + J^2$, or $D^2 + 2RD + (R^2 + J^2)$, and the numerator being a polynomial in D , of the order never exceeding that of the denominator. By combining various formulae according to the rule (f), it is possible to obtain every algebraical fraction (the order of the numerator never exceeding that of the denominator), and hence the way is open to find the functional equivalent of an arbitrary operational fraction, and to attempt a systematic tabulation. The procedure adopted here consisted of two steps: firstly, Table 2 was compiled, giving functional equivalents of simplest operational fractions, *i.e.*, those whose denominators were powers of only one of the factors D , $D + R$, $D^2 + J^2$ or $D^2 + 2RD + H$ (where $H = R^2 + J^2$), and the numerators were either constant or single powers of D ; and secondly, we have derived Table 3, giving functional equivalents of the most general operational fractions of the 1st, 2nd, 3rd and 4th order.

The derivation of Table 2 was comparatively easy. Formulae (31 to 37) are simply inversions of (1 to 7). In each of the eight subsequent groups, it was always possible to find one formula directly by inspection of Table 1, *e.g.*, the formula (48) is simply an inversion of (11). All remaining formulae of each particular group could then be obtained by simple differentiation or integration, *i.e.*, by applying the rules (d) and (e). Only the last four groups (formulae 73 to 94) required some little more effort. For example, (75) was derived by combining (17) and (20) so as to obtain a fraction with the numerator D^2 ; then the remaining formulae of the group (73 to 79) could be found immediately by differentiation or integration. The tabulation has included all simple operational fractions up to the 6th order.

Table 3 required much more effort. This table consists of four groups, including operational fractions of the first four orders. In each group there are a number of operational fractions with various types of factorized denominators, including all possible combinations of real, imaginary, complex and zero roots, also all cases involving multiple roots. It was found that there were two different types of fractions of the 1st order, six of the 2nd order, eleven of the 3rd order, and twenty-five of the 4th order, and all these had to be tackled in turn. The procedure was simple whenever the denominator was a power of one of the factors D , $D + R$, $D^2 + J^2$ or $D^2 + 2RD + H$ because, in such cases, the functional equivalents could be determined by combining appropriate formulae of Table 2. For example, the formula (100) was obtained directly by combining (80, 81, 82); similarly, (118) is a simple combination of (47 to 51). If, however, the denominator contained different linear or quadratic factors, the fraction had to be resolved into simple fractions, whose functional equivalents were then found in Table 2 and combined into the final

formula. The algebraical work was complicated in many cases, and extensive checks were made to ensure reliability of all results. In many cases simple checking formulae are given in the table, as they may be helpful for the user.

Table 3 could be continued to include operational fractions of 5th, 6th and higher orders. This would require, however, an immense amount of work. For instance, there would be forty-three different forms of fractions of 5th order, and eighty-four of those of 6th order, and the corresponding formulae would be increasingly complicated. It was found impossible to perform such an enormous task. Instead, the reader will find Tables 4 and 5, which contain a comparatively small (but sufficient) number of formulae for reducing every fraction of 5th or 6th order respectively, to a combination of fractions of lower order. The latter can be dealt with by using Table 3 or 2.

3. *Use of Tables for Response Calculations.*—We consider only problems which reduce to the solution of a linear differential equation with constant coefficients, or of a system of simultaneous differential equations of the same type. The forcing function (if any) in each equation must be one of those appearing in Table 1 (or any linear combination of such functions).

Let us consider, for simplicity, one equation of the 3rd order :

$$\frac{d^3x}{d\tau^3} + K_2 \frac{d^2x}{d\tau^2} + K_1 \frac{dx}{d\tau} + K_0x = F_1(\tau), \dots \dots \dots \text{(III)}$$

where x is an unknown function of τ , and $F_1(\tau)$ the forcing function; and let the initial conditions be $x = x_0$, $dx/d\tau = \dot{x}_0$, $d^2x/d\tau^2 = \ddot{x}_0$, at $\tau = 0$. The equation (III) can be transformed into operational form by applying the operation (I) to each term. Suppose that $\varphi_1(D)$ is the operational equivalent of $F_1(\tau)$, and $X = \varphi(D)$ that of $x(\tau)$. Applying the rule (d) of section 2 three times, we find that :

the operational equivalent of $dx/d\tau$ is $DX - Dx_0$,

the operational equivalent of $d^2x/d\tau^2$ is $D^2X - D^2x_0 - D\dot{x}_0$,

the operational equivalent of $d^3x/d\tau^3$ is $D^3X - D^3x_0 - D^2\dot{x}_0 - D\ddot{x}_0$,

and substituting these expressions into (III), we obtain the subsidiary equation in the form :

$$(D^3 + K_2D^2 + K_1D + K_0)X = \varphi_1(D) + x_0(D^3 + K_2D^2 + K_1D) + \dot{x}_0(D^2 + K_2D) + \ddot{x}_0D. \text{ (IV)}$$

The procedure of obtaining the subsidiary equation is thus :

- (i) To replace x by X , $dx/d\tau$ by DX , $d^2x/d\tau^2$ by D^2X , etc., and write the left-hand part of the equation as a product of X by an appropriate polynomial in D
- (ii) To replace the forcing function by its operational equivalent
- (iii) To add on the right terms accounting for initial conditions, formed in such a way; x_0 is multiplied by the left-hand polynomial in D less the constant term, and \dot{x}_0 , \ddot{x}_0 , etc., multiplied by shorter polynomials obtained each time by dropping the next term and dividing by D .

It remains then to solve the subsidiary equation (IV) for X , whereupon we obtain :

$$X = \varphi(D) = \frac{\varphi_1(D) + x_0(D^3 + K_2D^2 + K_1D) + \dot{x}_0(D^2 + K_2D) + \ddot{x}_0D}{D^3 + K_2D^2 + K_1D + K_0}, \dots \text{ (V)}$$

which is the operational equivalent of x , in the form of an algebraic fraction. This must be interpreted by using the appropriate tables. In our case Table 3 is sufficient if the order of the fraction does not exceed 4 but, if the order is 5 or 6, Table 4 or 5 must also be used.

A similar method may be applied to solve a system of n simultaneous differential equations with n unknown functions x, y, z, \dots of a single independent variable τ . All equations are then transformed into operational form by applying the operation (I) term by term. Let the symbols X, Y, Z, \dots denote operational equivalents of x, y, z, \dots , respectively. The left-hand part of each equation becomes a linear combination of X, Y, Z, \dots , multiplied respectively by appropriate polynomials in D ; on the right, we write the operational equivalent of the respective

forcing function, and add products of initial values $x_0, \dot{x}_0, \ddot{x}_0, \dots, y_0, \dot{y}_0, \ddot{y}_0, \dots$, etc., by polynomials formed in the same way as described above. We obtain n subsidiary equations. linear in X, Y, Z, \dots and, by solving them algebraically for X, Y, Z, \dots (preferably by using determinants), we find the operational equivalents of x, y, z, \dots , which must then be interpreted by making use of the tables.

Several examples are given in the Appendix, and the reader will find that the solution of problems by this method is extremely simple and rapid. It may be mentioned that there is really no need to write X instead of x , etc., in subsidiary equations, as there is never a risk of confusing the operational equivalent with the function itself.

4. *Additional Remarks.*—The following remarks may not be superfluous:

(a) In our tables, all exponentials are written in the form $e^{-R\tau}, e^{-r\tau}$, etc., the exponents being assumed to be negative. The reason is that systems normally encountered in engineering are (or should be) stable, so that the real parts of the stability roots are usually negative. The formulae can, of course, be used when one or more exponents are positive, which simply means writing R instead of $(-R)$ etc., both in the function and in its operational equivalent.

(b) If a power series in τ is required for any function $F(\tau)$ whose operational equivalent $\varphi(D)$ is known, then the easiest way is usually to expand $\varphi(D)$ as a power series in $1/D$, simply by dividing the numerator by the denominator, and then to interpret by means of the formulae (31 to 37) of Table 2.

(c) The initial value of $F(\tau)$, for $\tau = 0$, can be found by letting D tend to infinity in the expansion of $\varphi(D)$ mentioned above or, which comes to the same, in the fractional expression of $\varphi(D)$. Thus, we have:

$$F(0) = \lim_{D \rightarrow \infty} \varphi(D) \quad (\text{or simpler } F(0) = \varphi(\infty)) \quad \dots \quad \text{(VI)}$$

In view of the notation used in Tables 3, 4, 5, the initial value of every function appearing in these tables is equal to a .

(d) A relation analogous to (VI) also exists for the limit of $F(\tau)$ when τ tends to infinity, if such a limit exists. We have then:

$$\lim_{\tau \rightarrow \infty} F(\tau) = \varphi(0) \quad (\text{or simpler } F(\infty) = \varphi(0)), \quad \dots \quad \text{(VII)}$$

and it is seen that this limit is always equal to the ratio of the constant terms of the numerator and denominator of the operational fraction. This formula is very useful in practical applications.

REFERENCES

No.	Author	Title, etc.
1	L. W. Bryant and D. H. Williams	The application of the method of operators to the calculation of the disturbed motion of an aeroplane. R. & M. 1346. July, 1930.
2	H. Jeffreys	<i>Operational Methods in Mathematical Physics</i> . Cambridge University Press. 1931.
3	P. Humbert	<i>Le Calcul Symbolique</i> . Hermann & Cie. 1934.
4	H. S. Carslaw and J. C. Jaeger	<i>Operational Methods in Applied Mathematics</i> . Oxford University Press. 1941.
5	N. W. McLachlan and P. Humbert	<i>Formulaire Pour Le Calcul Symbolique</i> . Gauthiers-Villars. 1941.
6	M. F. Gardner and J. L. Barnes	<i>Transients in Linear Systems</i> . Vol. I. Chapman and Hall. 1942.
7	H. Jeffreys and B. S. Jeffreys	<i>Methods of Mathematical Physics</i> . Cambridge University Press. 1950.
8	W. Bollay	Aerodynamic stability and automatic control (Appendix A: Method of Laplace Transforms). <i>J.Ae.Sci.</i> Vol. 18. p. 606. September, 1951.
9	Staff of the Bateman Manuscript Project	<i>Tables of Integral Transforms</i> . Vol. I. McGraw-Hill. 1954.

TABLE 1

Operational Equivalents of Simple Functions

Function $F(\tau)$	Operational equivalent $\varphi(D)$	Number
1	1	1
τ	$1/D$	2
τ^2	$2/D^2$	3
τ^3	$6/D^3$	4
τ^4	$24/D^4$	5
τ^5	$120/D^5$	6
τ^6	$720/D^6$	7
$e^{-R\tau}$	$D/(D + R)$	8
$\tau e^{-R\tau}$	$D/(D + R)^2$	9
$\tau^2 e^{-R\tau}$	$2D/(D + R)^3$	10
$\tau^3 e^{-R\tau}$	$6D/(D + R)^4$	11
$\tau^4 e^{-R\tau}$	$24D/(D + R)^5$	12
$\tau^5 e^{-R\tau}$	$120D/(D + R)^6$	13
$\tau^6 e^{-R\tau}$	$720D/(D + R)^7$	14
$\cos J\tau$	$\frac{D^2}{D^2 + J^2}$	15
$\tau \cos J\tau$	$\frac{D(D^2 - J^2)}{(D^2 + J^2)^2}$	16
$\tau^2 \cos J\tau$	$\frac{2D^2(D^2 - 3J^2)}{(D^2 + J^2)^3}$	17
$\tau^3 \cos J\tau$	$\frac{6D(D^4 - 6J^2D^2 + J^4)}{(D^2 + J^2)^4}$	18
$\sin J\tau$	$\frac{JD}{D^2 + J^2}$	19
$\tau \sin J\tau$	$\frac{2JD^2}{(D^2 + J^2)^2}$	20
$\tau^2 \sin J\tau$	$\frac{2JD(3D^2 - J^2)}{(D^2 + J^2)^3}$	21
$\tau^3 \sin J\tau$	$\frac{24JD^2(D^2 - J^2)}{(D^2 + J^2)^4}$	22

TABLE 1—continued

Function $F(\tau)$	Operational equivalent	Number
$e^{-R\tau} \cos J\tau$	$\frac{D(D+R)}{D^2 + 2RD + (R^2 + J^2)}$	23
$\tau e^{-R\tau} \cos J\tau$	$\frac{D\{D^2 + 2RD + (R^2 - J^2)\}}{\{D^2 + 2RD + (R^2 + J^2)\}^2}$	24
$\tau^2 e^{-R\tau} \cos J\tau$	$\frac{2D(D+R)\{D^2 + 2RD + (R^2 - 3J^2)\}}{\{D^2 + 2RD + (R^2 + J^2)\}^3}$	25
$\tau^3 e^{-R\tau} \cos J\tau$	$\frac{6D\{D^4 + 4RD^3 + 6(R^2 - J^2)D^2 + 4R(R^2 - 3J^2)D + (R^4 - 6R^2J^2 + J^4)\}}{\{D^2 + 2RD + (R^2 + J^2)\}^4}$	26
$e^{-R\tau} \sin J\tau$	$\frac{JD}{D^2 + 2RD + (R^2 + J^2)}$	27
$\tau e^{-R\tau} \sin J\tau$	$\frac{2JD(D+R)}{\{D^2 + 2RD + (R^2 + J^2)\}^2}$	28
$\tau^2 e^{-R\tau} \sin J\tau$	$\frac{2JD\{3D^2 + 6RD + (3R^2 - J^2)\}}{\{D^2 + 2RD + (R^2 + J^2)\}^3}$	29
$\tau^3 e^{-R\tau} \sin J\tau$	$\frac{24JD(D+R)\{D^2 + 2RD + (R^2 - J^2)\}}{\{D^2 + 2RD + (R^2 + J^2)\}^4}$	30

TABLE 2

Functions Equivalent to Simple Operational Expressions

Operational expression $\varphi(D)$	Equivalent function $F(\tau)$	Number
1	1	31
$1/D$	τ	32
$1/D^2$	$\tau^2/2$	33
$1/D^3$	$\tau^3/6$	34
$1/D^4$	$\tau^4/24$	35
$1/D^5$	$\tau^5/120$	36
$1/D^6$	$\tau^6/720$	37
$R/(D + R)$	$1 - e^{-R\tau}$	38
$D/(D + R)$	$e^{-R\tau}$	39
$R^2/(D + R)^2$	$1 - (1 + R\tau) e^{-R\tau}$	40
$D/(D + R)^2$	$\tau e^{-R\tau}$	41
$D^2/(D + R)^2$	$(1 - R\tau) e^{-R\tau}$	42
$R^3/(D + R)^3$	$1 - (1 + R\tau + \frac{1}{2}R^2\tau^2) e^{-R\tau}$	43
$D/(D + R)^3$	$\frac{1}{2}\tau^2 e^{-R\tau}$	44
$D^2/(D + R)^3$	$(\tau - \frac{1}{2}R\tau^2) e^{-R\tau}$	45
$D^3/(D + R)^3$	$(1 - 2R\tau + \frac{1}{2}R^2\tau^2) e^{-R\tau}$	46
$R^4/(D + R)^4$	$1 - (1 + R\tau + \frac{1}{2}R^2\tau^2 + \frac{1}{6}R^3\tau^3) e^{-R\tau}$	47
$D/(D + R)^4$	$\frac{1}{6}\tau^3 e^{-R\tau}$	48
$D^2/(D + R)^4$	$(\frac{1}{2}\tau^2 - \frac{1}{6}R\tau^3) e^{-R\tau}$	49
$D^3/(D + R)^4$	$(\tau - R\tau^2 + \frac{1}{6}R^2\tau^3) e^{-R\tau}$	50
$D^4/(D + R)^4$	$(1 - 3R\tau + \frac{3}{2}R^2\tau^2 - \frac{1}{6}R^3\tau^3) e^{-R\tau}$	51
$R^5/(D + R)^5$	$1 - (1 + R\tau + \frac{1}{2}R^2\tau^2 + \frac{1}{6}R^3\tau^3 + \frac{1}{24}R^4\tau^4) e^{-R\tau}$	52
$D/(D + R)^5$	$\frac{1}{24}\tau^4 e^{-R\tau}$	53
$D^2/(D + R)^5$	$(\frac{1}{6}\tau^3 - \frac{1}{24}R\tau^4) e^{-R\tau}$	54
$D^3/(D + R)^5$	$(\frac{1}{2}\tau^2 - \frac{1}{3}R\tau^3 + \frac{1}{24}R^2\tau^4) e^{-R\tau}$	55
$D^4/(D + R)^5$	$(\tau - \frac{3}{2}R\tau^2 + \frac{1}{2}R^2\tau^3 - \frac{1}{24}R^3\tau^4) e^{-R\tau}$	56
$D^5/(D + R)^5$	$(1 - 4R\tau + 3R^2\tau^2 - \frac{2}{3}R^3\tau^3 + \frac{1}{24}R^4\tau^4) e^{-R\tau}$	57

TABLE 2—continued

Operational expression $\varphi(D)$	Equivalent function $F(\tau)$	Number
$R^6/(D + R)^6$	$1 - (1 + R\tau + \frac{1}{2}R^2\tau^2 + \frac{1}{6}R^3\tau^3 + \frac{1}{24}R^4\tau^4 + \frac{1}{120}R^5\tau^5) e^{-R\tau}$	58
$D/(D + R)^6$	$\frac{1}{120}R^5\tau^5 e^{-R\tau}$	59
$D^2/(D + R)^6$	$(\frac{1}{24}R^4\tau^4 - \frac{1}{120}R^5\tau^5) e^{-R\tau}$	60
$D^3/(D + R)^6$	$(\frac{1}{6}R^3\tau^3 - \frac{1}{12}R^4\tau^4 + \frac{1}{120}R^5\tau^5) e^{-R\tau}$	61
$D^4/(D + R)^6$	$(\frac{1}{2}\tau^2 - \frac{1}{2}R\tau^3 + \frac{1}{8}R^2\tau^4 - \frac{1}{120}R^3\tau^5) e^{-R\tau}$	62
$D^5/(D + R)^6$	$(\tau - 2R\tau^2 + R^2\tau^3 - \frac{1}{6}R^3\tau^4 + \frac{1}{120}R^4\tau^5) e^{-R\tau}$	63
$D^6/(D + R)^6$	$(1 - 5R\tau + 5R^2\tau^2 - \frac{5}{3}R^3\tau^3 + \frac{5}{24}R^4\tau^4 - \frac{1}{120}R^5\tau^5) e^{-R\tau}$	64
$J^2/(D^2 + J^2)$	$1 - \cos J\tau$	65
$D/(D^2 + J^2)$	$\frac{\sin J\tau}{J}$	66
$D^2/(D^2 + J^2)$	$\cos J\tau$	67
$J^4/(D^2 + J^2)^2$	$1 - \cos J\tau - \frac{1}{2}J\tau \sin J\tau$	68
$D/(D^2 + J^2)^2$	$\frac{1}{2J^2} \left(\frac{\sin J\tau}{J} - \tau \cos J\tau \right)$	69
$D^2/(D^2 + J^2)^2$	$\frac{1}{2}\tau \frac{\sin J\tau}{J}$	70
$D^3/(D^2 + J^2)^2$	$\frac{1}{2} \left(\tau \cos J\tau + \frac{\sin J\tau}{J} \right)$	71
$D^4/(D^2 + J^2)^2$	$\cos J\tau - \frac{1}{2}J\tau \sin J\tau$	72
$J^6/(D^2 + J^2)^3$	$1 - (1 - \frac{1}{8}J^2\tau^2) \cos J\tau - \frac{3}{8}J\tau \sin J\tau$	73
$D/(D^2 + J^2)^3$	$\frac{1}{8J^4} \left\{ (3 - J^2\tau^2) \frac{\sin J\tau}{J} - 3\tau \cos J\tau \right\}$	74
$D^2/(D^2 + J^2)^3$	$\frac{1}{8J^2} \left(\tau \frac{\sin J\tau}{J} - \tau^2 \cos J\tau \right)$	75
$D^3/(D^2 + J^2)^3$	$\frac{1}{8J^2} \left\{ (1 + J^2\tau^2) \frac{\sin J\tau}{J} - \tau \cos J\tau \right\}$	76
$D^4/(D^2 + J^2)^3$	$\frac{1}{8} \left(\tau^2 \cos J\tau + 3\tau \frac{\sin J\tau}{J} \right)$	77
$D^5/(D^2 + J^2)^3$	$\frac{1}{8} \left\{ 5\tau \cos J\tau + (3 - J^2\tau^2) \frac{\sin J\tau}{J} \right\}$	78
$D^6/(D^2 + J^2)^3$	$(1 - \frac{1}{8}J^2\tau^2) \cos J\tau - \frac{7}{8}J\tau \sin J\tau$	79

TABLE 2—continued

Operational expression $\varphi(D)$	Equivalent function $F(\tau)$	Number
$\frac{H}{D^2 + 2RD + H}$	$1 - \left(\cos J\tau + \frac{R}{J} \sin J\tau \right) e^{-R\tau}$	80
$\frac{D}{D^2 + 2RD + H}$	$e^{-R\tau} \frac{\sin J\tau}{J}$	81
$\frac{D^2}{D^2 + 2RD + H}$	$\left(\cos J\tau - \frac{R}{J} \sin J\tau \right) e^{-R\tau}$	82
$\frac{H^2}{(D^2 + 2RD + H)^2}$	$1 - \left[\left(1 - \frac{RH}{2J^2} \tau \right) \cos J\tau + \frac{1}{2} \left\{ \frac{R(3H - 2R^2)}{J^2} + H\tau \right\} \frac{\sin J\tau}{J} \right] e^{-R\tau}$	83
$\frac{D}{(D^2 + 2RD + H)^2}$	$\frac{1}{2J^2} \left(\frac{\sin J\tau}{J} - \tau \cos J\tau \right) e^{-R\tau}$	84
$\frac{D^2}{(D^2 + 2RD + H)^2}$	$\frac{1}{2J^2} \left\{ R\tau \cos J\tau + (J^2\tau - R) \frac{\sin J\tau}{J} \right\} e^{-R\tau}$	85
$\frac{D^3}{(D^2 + 2RD + H)^2}$	$\frac{1}{2J^2} \left\{ (H - 2R^2)\tau \cos J\tau + (H - 2RJ^2\tau) \frac{\sin J\tau}{J} \right\} e^{-R\tau}$	86
$\frac{D^4}{(D^2 + 2RD + H)^2}$	$\frac{1}{2J^2} \left[\left\{ 2J^2 - R(3H - 4R^2) \tau \right\} \cos J\tau + \left\{ J^2(4R^2 - H)\tau - R(3H - 2R^2) \right\} \frac{\sin J\tau}{J} \right] e^{-R\tau}$	87
$\frac{H^3}{(D^2 + 2RD + H)^3}$	$1 - \left[\left\{ 1 - \frac{RH}{2J^2} \left(1 + \frac{3H}{4J^2} \right) \tau - \frac{H^2}{8J^2} \tau^2 \right\} \cos J\tau + \frac{1}{8J^2} \left\{ \frac{R}{J^2} (15H^2 - 20R^2H + 8R^4) + H(5H - 4R^2)\tau - H^2R\tau^2 \right\} \frac{\sin J\tau}{J} \right] e^{-R\tau}$	88
$\frac{D}{(D^2 + 2RD + H)^3}$	$\frac{1}{8J^4} \left\{ (3 - J^2\tau^2) \frac{\sin J\tau}{J} - 3\tau \cos J\tau \right\} e^{-R\tau}$	89
$\frac{D^2}{(D^2 + 2RD + H)^3}$	$\frac{1}{8J^4} \left\{ (3R\tau - J^2\tau^2) \cos J\tau + (RJ^2\tau^2 + J^2\tau - 3R) \frac{\sin J\tau}{J} \right\} e^{-R\tau}$	90
$\frac{D^3}{(D^2 + 2RD + H)^3}$	$\frac{1}{8J^4} \left[\{ 2RJ^2\tau^2 - (H + 2R^2)\tau \} \cos J\tau + \{ (H + 2R^2) - 2RJ^2\tau + J^2(H - 2R^2)\tau^2 \} \frac{\sin J\tau}{J} \right] e^{-R\tau}$	91
$\frac{D^4}{(D^2 + 2RD + H)^3}$	$\frac{1}{8J^4} \left[\{ 3RH\tau + J^2(H - 4R^2)\tau^2 \} \cos J\tau - \{ 3RH - 3J^2H\tau + J^2R(3H - 4R^2)\tau^2 \} \frac{\sin J\tau}{J} \right] e^{-R\tau}$	92
$\frac{D^5}{(D^2 + 2RD + H)^3}$	$\frac{1}{8J^4} \left[\{ 4RJ^2(2R^2 - H)\tau^2 + (5H^2 - 16R^2H + 8R^4)\tau \} \cos J\tau + \{ 3H^2 - 4RJ^2(3H - 2R^2)\tau - J^2(H^2 - 8R^2H + 8R^4)\tau^2 \} \frac{\sin J\tau}{J} \right] e^{-R\tau}$	93
$\frac{D^6}{(D^2 + 2RD + H)^3}$	$\frac{1}{8J^4} \left[\{ 8J^4 - R(25H^2 - 60R^2H + 32R^4)\tau - J^2(H^2 - 12R^2H + 16R^4)\tau^2 \} \cos J\tau - \{ R(15H^2 - 20R^2H + 8R^4) + J^2(7H^2 - 44R^2H + 32R^4)\tau - J^2R(5H^2 - 20R^2H + 16R^4)\tau^2 \} \frac{\sin J\tau}{J} \right] e^{-R\tau}$	94

TABLE 3

Functions Equivalent to General Operational Expressions in Form of Fractions with Denominators of 1st to 4th Order

(1) *Fractions with denominators linear in D*

Operational expression $\varphi(D)$	Equivalent function $F(\tau)$	Number
$\frac{aD + b}{D + R}$	$\frac{b}{R} + \left(a - \frac{b}{R}\right) e^{-R\tau}$	95
$\frac{aD + b}{D}$	$a + b\tau$	96

(2) *Fractions with denominators quadratic in D*

Operational expression $\varphi(D)$	Equivalent function $F(\tau)$	Number
$\frac{aD^2 + bD + c}{(D + R)(D + r)}$	$\frac{c}{Rr} + \frac{aR - b + c/R}{R - r} e^{-R\tau} - \frac{ar - b + c/r}{R - r} e^{-r\tau}$	97
$\frac{aD^2 + bD + c}{(D + r)^2}$	$\frac{c}{r^2} + \left\{ \left(a - \frac{c}{r^2}\right) - \left(ar - b + \frac{c}{r}\right) \tau \right\} e^{-r\tau}$	98
$\frac{aD^2 + bD + c}{D^2 + J^2}$	$\frac{c}{J^2} + \left(a - \frac{c}{J^2}\right) \cos J\tau + \frac{b}{J} \sin J\tau$	99
$\frac{aD^2 + bD + c}{D^2 + 2RD + H}$	$\frac{c}{H} + \left\{ \left(a - \frac{c}{H}\right) \cos J\tau - \left(aR - b + \frac{cR}{H}\right) \frac{\sin J\tau}{J} \right\} e^{-R\tau}$	100
$\frac{aD^2 + bD + c}{D(D + R)}$	$\left(\frac{b}{R} - \frac{c}{R^2}\right) + \frac{c}{R} \tau + \left(a - \frac{b}{R} + \frac{c}{R^2}\right) e^{-R\tau}$	101
$\frac{aD^2 + bD + c}{D^2}$	$a + b\tau + \frac{1}{2}c\tau^2$	102

(3) *Fractions with denominators cubic in D*

Operational expression $\varphi(D)$	Equivalent function $F(\tau)$	Number
$\frac{aD^3 + bD^2 + cD + d}{(D + R_1)(D + R_2)(D + R_3)}$	$A + B_1 e^{-R_1\tau} + B_2 e^{-R_2\tau} + B_3 e^{-R_3\tau},$ <p>where :</p> $A = \frac{d}{R_1 R_2 R_3}, \quad B_1 = \frac{aR_1^2 - bR_1 + c - d/R_1}{(R_1 - R_2)(R_1 - R_3)},$ $B_2 = \frac{aR_2^2 - bR_2 + c - d/R_2}{(R_2 - R_1)(R_2 - R_3)}, \quad B_3 = \frac{aR_3^2 - bR_3 + c - d/R_3}{(R_3 - R_1)(R_3 - R_2)}.$ <p>Check: $A + B_1 + B_2 + B_3 = a.$</p>	103

TABLE 3—continued

(3) Fractions with denominators cubic in D —continued

Operational expression $\varphi(D)$	Equivalent function $F(\tau)$	Number
$\frac{aD^3 + bD^2 + cD + d}{(D + R)(D + r)^2}$	$A + B e^{-R\tau} + (C + E\tau) e^{-r\tau},$ <p>where:</p> $A = \frac{d}{Rr^2}, \quad B = \frac{aR^2 - bR + c - d/R}{(R - r)^2},$ $C = \frac{a(r^2 - 2Rr) + bR - c + d \left(\frac{2}{r} - \frac{R}{r^2} \right)}{(R - r)^2},$ $E = \frac{ar^2 - br + c - d/r}{R - r}.$ <p>Check: $A + B + C = a, \quad BR + Cr - E = a(R + 2r) - b.$</p>	104
$\frac{aD^3 + bD^2 + cD + d}{(D + r)^3}$	$\frac{d}{r^3} + \left\{ \left(a - \frac{d}{r^3} \right) - \left(2ar - b + \frac{d}{r^2} \right) \tau + \right.$ $\left. + \frac{1}{2} \left(ar^2 - br + c - \frac{d}{r} \right) \tau^2 \right\} e^{-r\tau}$	105
$\frac{aD^3 + bD^2 + cD + d}{(D^2 + J^2)(D + r)}$	$A + B \cos J\tau + C \frac{\sin J\tau}{J} + E e^{-r\tau},$ <p>where:</p> $A = \frac{d}{rJ^2}, \quad B = \frac{aJ^2 + br - c - rd/J^2}{J^2 + r^2},$ $C = \frac{(b - ar)J^2 + cr - d}{J^2 + r^2}, \quad E = \frac{ar^2 - br + c - d/r}{J^2 + r^2}.$ <p>Check: $A + B + E = a, \quad C - Er = b - ar.$</p>	106
$\frac{aD^3 + bD^2 + cD + d}{(D^2 + 2RD + H)(D + r)}$	$A + \left(B \cos J\tau + C \frac{\sin J\tau}{J} \right) e^{-R\tau} + E e^{-r\tau},$ <p>where:</p> $A = \frac{d}{rH}, \quad B = \frac{a(H - 2Rr) + br - c + d(2R - r)/H}{H - 2Rr + r^2},$ $C = \frac{a(2R^2r - RH - rH) + b(H - Rr) - c(R - r) +}{H - 2Rr + r^2}$ $+ \frac{d(2R^2 - Rr - H)/H}{H - 2Rr + r^2},$ $E = \frac{ar^2 - br + c - d/r}{H - 2Rr + r^2}.$ <p>Check: $A + B + E = a, \quad C - BR - Er = b - a(2R + r).$</p>	107

TABLE 3—continued

(3) Fractions with denominators cubic in D —continued

Operational expression $\varphi(D)$	Equivalent function $F(\tau)$	Number
$\frac{aD^3 + bD^2 + cD + d}{D(D + R)(D + r)}$	$\frac{d}{Rr} \tau + \left(\frac{c}{Rr} - d \frac{R + r}{R^2 r^2} \right) + \frac{aR - b + c/R - d/R^2}{R - r} e^{-R\tau} - \frac{ar - b + c/r - d/r^2}{R - r} e^{-r\tau}$	108
$\frac{aD^3 + bD^2 + cD + d}{D(D + r)^2}$	$\frac{d}{r^2} \tau + \left(\frac{c}{r^2} - \frac{2d}{r^3} \right) + \left\{ \left(a - \frac{c}{r^2} + \frac{2d}{r^3} \right) - \left(ar - b + \frac{c}{r} - \frac{d}{r^2} \right) \tau \right\} e^{-r\tau}$	109
$\frac{aD^3 + bD^2 + cD + d}{D(D^2 + J^2)}$	$\frac{d}{J^2} \tau + \frac{c}{J^2} + \left(a - \frac{c}{J^2} \right) \cos J\tau + \left(b - \frac{d}{J^2} \right) \frac{\sin J\tau}{J}$	110
$\frac{aD^3 + bD^2 + cD + d}{D(D^2 + 2RD + H)}$	$\frac{d}{H} \tau + \left(\frac{c}{H} - 2d \frac{R}{H^2} \right) + \left\{ \left(a - \frac{c}{H} + 2d \frac{R}{H^2} \right) \cos J\tau - \left(aR - b + \frac{cR}{H} - d \frac{2R^2 - H}{H^2} \right) \frac{\sin J\tau}{J} \right\} e^{-R\tau}$	111
$\frac{aD^3 + bD^2 + cD + d}{D^2(D + R)}$	$\frac{d}{2R} \tau^2 + \left(\frac{c}{R} - \frac{d}{R^2} \right) \tau + \left(\frac{b}{R} - \frac{c}{R^2} + \frac{d}{R^3} \right) + \left(a - \frac{b}{R} + \frac{c}{R^2} - \frac{d}{R^3} \right) e^{-R\tau}$	112
$\frac{aD^3 + bD^2 + cD + d}{D^3}$	$a + b\tau + \frac{1}{2}c\tau^2 + \frac{1}{6}d\tau^3$	113

(A) Fractions with denominators quartic in D

Operational expression $\varphi(D)$	Equivalent function $F(\tau)$	Number
$\frac{aD^4 + bD^3 + cD^2 + dD + f}{(D + R_1)(D + R_2)(D + R_3)(D + R_4)}$	$A + B_1 e^{-R_1\tau} + B_2 e^{-R_2\tau} + B_3 e^{-R_3\tau} + B_4 e^{-R_4\tau}$, where: $A = \frac{f}{R_1 R_2 R_3 R_4}$, $B_1 = \frac{aR_1^3 - bR_1^2 + cR_1 - d + f/R_1}{(R_1 - R_2)(R_1 - R_3)(R_1 - R_4)}$, and analogous formulae for B_2, B_3, B_4 . Check: $A + B_1 + B_2 + B_3 + B_4 = a$.	114

TABLE 3—continued

(4) Fractions with denominators quartic in D —continued

Operational expression $\varphi(D)$	Equivalent function $F(\tau)$	Number
$\frac{aD^4 + bD^3 + cD^2 + dD + f}{(D + R_1)(D + R_2)(D + r)^2}$	<p>$A + B_1 e^{-R_1\tau} + B_2 e^{-R_2\tau} + (C - E\tau) e^{-r\tau}$,</p> <p>where:</p> $A = \frac{f}{R_1 R_2 r^2},$ $B_1 = \frac{aR_1^3 - bR_1^2 + cR_1 - d + f/R_1}{(R_1 - R_2)(R_1 - r)^2} \text{ (analogous for } B_2),$ $E = \frac{ar^3 - br^2 + cr - d + f/r}{(R_1 - r)(R_2 - r)},$ $C(R_1 - r)^2(R_2 - r)^2 = ar^2\{r^2 - 2r(R_1 + R_2) + 3R_1R_2\} +$ $+ br\{r(R_1 + R_2) - 2R_1R_2\} + c(R_1R_2 - r^2) - d(R_1 + R_2 - 2r) -$ $- f\left(3 - 2\frac{R_1 + R_2}{r} + \frac{R_1R_2}{r^2}\right).$ <p>Check: $A + B_1 + B_2 + C = a$.</p>	<p>115</p>
$\frac{aD^4 + bD^3 + cD^2 + dD + f}{(D + R)^2(D + r)^2}$	<p>$A + (K - L\tau) e^{-R\tau} + (k - l\tau) e^{-r\tau}$,</p> <p>where:</p> $A = \frac{f}{R^2 r^2},$ $K = \frac{aR^2(R - 3r) + 2bRr - c(R + r) + 2d - \frac{f}{R^2}(3R - r)}{(R - r)^3},$ $L = \frac{aR^3 - bR^2 + cR - d + f/R}{(R - r)^2},$ <p>and analogous formulae for k, l.</p> <p>Check: $A + K + k = a$, $L + l + KR + kr = 2a(R + r) - b$.</p>	<p>116</p>
$\frac{aD^4 + bD^3 + cD^2 - dD + f}{(D + R)(D + r)^3}$	<p>$A + B e^{-R\tau} + (C + E\tau - \frac{1}{2}G\tau^2) e^{-r\tau}$,</p> <p>where:</p> $A = \frac{f}{Rr^3}, \quad B = \frac{aR^3 - bR^2 + cR - d + f/R}{(R - r)^3},$ $C = \frac{-ar(3R^2 - 3Rr + r^2) + bR^2 - cR + d - \frac{f}{r^3}(R^2 - 3Rr + 3r^2)}{(R - r)^3},$ $E = \frac{ar^2(3R - 2r) - br(2R - r) + cR - d + \frac{f}{r^2}(2r - R)}{(R - r)^2},$ $G = \frac{ar^3 - br^2 + cr - d + \frac{f}{r}}{R - r}.$ <p>Check: $A + B + C = a$,</p> $ARr + E(R - r) - G = c - 2br + 3ar^2.$	<p>117</p>

TABLE 3—continued

(4) Fractions with denominators quartic in D —continued

Operational expression $\varphi(D)$	Equivalent function $F(\tau)$	Number
$\frac{aD^4 + bD^3 + cD^2 + dD + f}{(D + r)^4}$	$\frac{f}{r^4} + \left\{ \left(a - \frac{f}{r^4} \right) - \left(3ar - b + \frac{f}{r^3} \right) \tau + \frac{1}{2} \left(3ar^2 - 2br + c - \frac{f}{r^2} \right) \tau^2 - \frac{1}{6} \left(ar^3 - br^2 + cr - d + \frac{f}{r} \right) \tau^3 \right\} e^{-r\tau}$	118
$\frac{aD^4 + bD^3 + cD^2 + dD + f}{(D + R_1)(D + R_2)(D^2 + j^2)}$	<p>$A + B_1 e^{-R_1\tau} - B_2 e^{-R_2\tau} + C \cos j\tau - E \frac{\sin j\tau}{j}$,</p> <p>where:</p> $A = \frac{f}{R_1 R_2 j^2}, \quad B_1 = \frac{aR_1^3 - bR_1^2 + cR_1 - d + f/R_1}{(R_1 - R_2)(R_1^2 + j^2)},$ $B_2 = \frac{aR_2^3 - bR_2^2 + cR_2 - d + f/R_2}{(R_1 - R_2)(R_2^2 + j^2)},$ $C = \frac{(j^2 - R_1 R_2)(aj^2 - c + f/j^2) + (R_1 + R_2)(bj^2 - d)}{(R_1^2 + j^2)(R_2^2 + j^2)},$ $E = \frac{j^2(R_1 + R_2)(aj^2 - c + f/j^2) - (j^2 - R_1 R_2)(bj^2 - d)}{(R_1^2 + j^2)(R_2^2 + j^2)}.$ <p>Check: $A + B_1 - B_2 + C = a$,</p> $AR_1 - B_2(R_1 - R_2) + CR_1 - E = b - aR_2.$	119
$\frac{aD^4 + bD^3 + cD^2 + dD + f}{(D + R)^2(D^2 + j^2)}$	<p>$A + (B - B'\tau) e^{-R\tau} + C \cos j\tau - E \frac{\sin j\tau}{j}$,</p> <p>where:</p> $A = \frac{f}{R^2 j^2}, \quad B' = \frac{aR^3 - bR^2 + cR - d + f/R}{R^2 + j^2},$ $B = \frac{aR^2(R^2 + 3j^2) - 2bRj^2 + c(j^2 - R^2) + 2dR - f(3 + j^2/R^2)}{(R^2 + j^2)^2},$ $C = \frac{(j^2 - R^2)(aj^2 - c + f/j^2) + 2R(bj^2 - d)}{(R^2 + j^2)^2},$ $E = \frac{2Rj^2(aj^2 - c + f/j^2) - (j^2 - R^2)(bj^2 - d)}{(R^2 + j^2)^2}.$ <p>Check: $A + B + C = a$, $BR + B' + E = 2aR - b$.</p>	120

TABLE 3—continued

(4) Fractions with denominators quartic in D —continued

Operational expression $\varphi(D)$	Equivalent function $F(\tau)$	Number
$\frac{aD^4 + bD^3 + cD^2 + dD + f}{(D + R_1)(D + R_2)(D^2 + 2rD + h)}$	<p>$A + B_1 e^{-R_1\tau} - B_2 e^{-R_2\tau} + \left(l \cos j\tau + n \frac{\sin j\tau}{j} \right) e^{-r\tau}$,</p> <p>where:</p> $A = \frac{f}{R_1 R_2 h}, \quad B_1 = \frac{aR_1^3 - bR_1^2 + cR_1 - d + f/R_1}{(R_1 - R_2)M_1},$ $B_2 = \frac{aR_2^3 - bR_2^2 + cR_2 - d + f/R_2}{(R_1 - R_2)M_2},$ $M_1 M_2 l = a\{h^2 - hR_1 R_2 - 2rh(R_1 + R_2) + 4r^2 R_1 R_2\} +$ $+ b\{h(R_1 + R_2) - 2rR_1 R_2\} + c\{R_1 R_2 - h\} +$ $+ d\{2r - R_1 - R_2\} + f \left\{ 1 - \frac{(R_1 - 2r)(R_2 - 2r)}{h} \right\},$ $M_1 M_2 n = a\{-h^2(R_1 + R_2 + r) + 3hR_1 R_2 r + 2r^2 h(R_1 + R_2) -$ $- 4R_1 R_2 r^3\} + b\{h^2 - R_1 R_2 h - rh(R_1 + R_2) +$ $+ 2R_1 R_2 r^2\} + c\{h(R_1 + R_2 - r) - R_1 R_2 r\} +$ $+ d\{(R_1 - r)(R_2 - r) + r^2 - h\} +$ $+ f \left\{ 3r - R_1 - R_2 - \frac{r}{h} (R_1 - 2r)(R_2 - 2r) \right\},$ <p>and</p> $M_1 = R_1^2 - 2rR_1 + h, \quad M_2 = R_2^2 - 2rR_2 + h.$ <p>Check: $A + B_1 - B_2 + l = a$,</p> $B_1 R_1 - B_2 R_2 + rl - n = a(2r + R_1 + R_2) - b.$	121
$\frac{aD^4 + bD^3 + cD^2 + dD + f}{(D + R)^2(D^2 + 2rD + h)}$	<p>$A + (B - B'\tau) e^{-R\tau} + \left(l \cos j\tau + n \frac{\sin j\tau}{j} \right) e^{-r\tau}$,</p> <p>where:</p> $A = \frac{f}{R^2 h}, \quad B' = \frac{aR^3 - bR^2 + cR - d + f/R}{M},$ $M^2 B = aR^2(R^2 - 4Rr + 3h) + 2bR(Rr - h) + c(h - R^2) +$ $+ 2d(R - r) - f(3 - 4r/R + h/R^2),$ $M^2 l = a\{h^2 - hR(R + 4r) + 4R^2 r^2\} + 2bR(h - Rr) +$ $+ c(R^2 - h) - 2d(R - r) + f\{1 - (R - 2r)^2/h\};$ $M^2 n = a\{-h^2(2R + r) + hRr(3R + 4r) - 4R^2 r^3\} +$ $+ b\{h^2 - hR(R + 2r) + 2R^2 r^2\} + c\{h(2R - r) - R^2 r\} +$ $+ d\{(R - r)^2 + r^2 - h\} + f\{3r - 2R - r(R - 2r)^2/h\},$ <p>and</p> $M = R^2 - 2Rr + h.$ <p>Check: $A + B + l = a$, $BR + B' + rl - n = 2a(R + r) - b.$</p>	122

TABLE 3—continued

(4) Fractions with denominators quartic in D —continued

Operational expression $\varphi(D)$	Equivalent function $F(\tau)$	Number
$\frac{aD^4 + bD^3 + cD^2 + dD + f}{(D^2 + J^2)(D^2 + j^2)}$	$\frac{f}{J^2j^2} + \frac{1}{J^2 - j^2} \left\{ \left(aJ^2 - c + \frac{f}{J^2} \right) \cos J\tau + (bJ^2 - d) \frac{\sin J\tau}{J} \right. \\ \left. - \left(aj^2 - c + \frac{f}{j^2} \right) \cos j\tau - (bj^2 - d) \frac{\sin j\tau}{j} \right\}$	123
$\frac{aD^4 + bD^3 + cD^2 + dD + f}{(D^2 + j^2)^2}$	$\frac{f}{j^4} + \left\{ \left(a - \frac{f}{j^4} \right) + \frac{1}{2} \left(b - \frac{d}{j^2} \right) \tau \right\} \cos j\tau + \\ + \frac{1}{2} \left\{ \left(b + \frac{d}{j^2} \right) - \left(aj^2 - c + \frac{f}{j^2} \right) \tau \right\} \frac{\sin j\tau}{j}$	124
$\frac{aD^4 + bD^3 + cD^2 + dD + f}{(D^2 + 2RD + H)(D^2 + j^2)}$	$A + \left(L \cos J\tau + N \frac{\sin J\tau}{J} \right) e^{-R\tau} + l \cos j\tau + n \frac{\sin j\tau}{j},$ <p>where:</p> $A = \frac{f}{Hj^2},$ $QL = a\{H(H - j^2) + 4R^2j^2\} - 2bRj^2 - c(H - j^2) + \\ + 2dR + f \left(1 - \frac{4R^2 + j^2}{H} \right),$ $QN = aR\{j^2(3H - 4R^2) - H^2\} + b\{H(H - j^2) + 2R^2j^2\} - \\ - cR(H + j^2) + d(2R^2 - H + j^2) + fR \left(3 - \frac{4R^2 + j^2}{H} \right),$ $Ql = (j^2 - H) \left(aj^2 - c + \frac{f}{j^2} \right) + 2R(bj^2 - d),$ $Qn = -2Rj^2 \left(aj^2 - c + \frac{f}{j^2} \right) + (j^2 - H)(bj^2 - d),$ <p>and</p> $Q = (j^2 - H)^2 + 4R^2j^2.$ <p>Check: $A + L + l = a, \quad N + n - RL = b - 2aR.$</p>	125
$\frac{aD^4 + bD^3 + cD^2 + dD + f}{(D^2 + 2RD + H)(D^2 + 2rD + h)}$	$A + \left(L \cos J\tau + N \frac{\sin J\tau}{J} \right) e^{-R\tau} + \left(l \cos j\tau + n \frac{\sin j\tau}{j} \right) e^{-r\tau},$ <p>where:</p> $QL = a\{H(H - h) + 4R(Rh - rH)\} - 2b(Rh - rH) - \\ - c(H - h) + 2d(R - r) + \frac{f}{H} \{H - h - 4R(R - r)\},$ $QN = a\{(3H - 4R^2)(Rh - rH) - H^2(R - r)\} + \\ + b\{H(H - h) + 2R(Rh - rH)\} - \\ - c\{(H + h)R - 2rH\} - d\{H - h - 2R(R - r)\} + \\ + \frac{f}{H} \{R(H - h) + 2(R - r)(H - 2R^2)\},$ <p>(analogous expressions for l and n)</p> $A = \frac{f}{Hh}, \text{ and } Q = (H - h)^2 + 4(R - r)(Rh - rH).$ <p>Check: $A + L + l = a, \quad N + n - RL - rl = b - 2a(R + r).$</p>	126

TABLE 3—continued

(4) Fractions with denominators quartic in D —continued

Operational expression $\varphi(D)$	Equivalent function $F(\tau)$	Number
$\frac{aD^4 + bD^3 + cD^2 + dD + f}{(D^2 + 2rD + h)^2}$	$A + \left\{ (B + B'\tau) \cos j\tau + (C + C'\tau) \frac{\sin j\tau}{j} \right\} e^{-r\tau},$ <p>where:</p> $A = \frac{f}{h^2}, \quad B = a - \frac{f}{h^2},$ $2j^2B' = ar(4r^2 - 3h) + b(h - 2r^2) + cr - d + fr/h,$ $2j^2C = ar(2r^2 - 3h) + bh - cr + d + fr \left(\frac{2r^2}{h^2} - \frac{3}{h} \right),$ $2C' = a(4r^2 - h) - 2br + c - f/h.$ <p>Check: $Br - B' - C = 4ar - b;$ $2C'r - B'h - Ch = (2ar - b)(2r^2 + h) + cr.$</p>	127
$\frac{aD^4 + bD^3 + cD^2 + dD + f}{D(D + R_1)(D + R_2)(D + R_3)}$	$A\tau + B + C_1 e^{-R_1\tau} + C_2 e^{-R_2\tau} + C_3 e^{-R_3\tau},$ <p>where:</p> $A = \frac{f}{R_1 R_2 R_3}, \quad B = \frac{d}{R_1 R_2 R_3} - \frac{f}{R_1 R_2 R_3} \left(\frac{1}{R_1} + \frac{1}{R_2} + \frac{1}{R_3} \right)$ $C_1 = \frac{aR_1^2 - bR_1 + c - d/R_1 + f/R_1^2}{(R_1 - R_2)(R_1 - R_3)},$ <p>and similar formulae for $C_2, C_3.$ Check: $B + C_1 + C_2 + C_3 = a.$</p>	128
$\frac{aD^4 + bD^3 + cD^2 + dD + f}{D(D + R)(D + r)^2}$	$A\tau + B + C e^{-R\tau} + (E + G\tau) e^{-r\tau},$ <p>where:</p> $A = \frac{f}{Rr^2}, \quad B = \frac{d}{Rr^2} - \frac{f}{Rr^2} \left(\frac{1}{R} + \frac{2}{r} \right).$ $C = \frac{aR^2 - bR + c - d/R + f/R^2}{(R - r)^2},$ $G = \frac{ar^2 - br + c - d/r + f/r^2}{R - r},$ $E = \frac{ar(r - 2R) + bR - c + d(2r - R)/r^2 + f(2R - 3r)/r^3}{(R - r)^2}.$ <p>Check: $B + C + E = a, \quad A + BR + E(R - r) + G = b - 2ar.$</p>	129
$\frac{aD^4 + bD^3 + cD^2 + dD + f}{D(D + r)^3}$	$\frac{f}{r^3} \tau + \left(\frac{d}{r^3} - \frac{3f}{r^4} \right) + \left\{ \left(a - \frac{d}{r^3} + \frac{3f}{r^4} \right) - \left(2ar - b + \frac{d}{r^2} - \frac{2f}{r^3} \right) \tau + \right.$ $\left. + \frac{1}{2} \left(ar^2 - br + c - \frac{d}{r} + \frac{f}{r^2} \right) \tau^2 \right\} e^{-r\tau}$	130

TABLE 3—continued

(4) Fractions with denominators quartic in D —continued

Operational expression $q(D)$	Equivalent function $F(\tau)$	Number
$\frac{aD^4 + bD^3 + cD^2 + dD + f}{D(D + R)(D^2 + j^2)}$	$A\tau + B + C e^{-R\tau} + E \cos j\tau - G \frac{\sin j\tau}{j},$ <p>where:</p> $A = \frac{f}{Rj^2}, \quad B = \frac{d}{Rj^2} - \frac{f}{R^2j^2},$ $C = \frac{aR^2 - bR + c - d/R + f/R^2}{R^2 + j^2},$ $E = \frac{aj^2 + bR - c - dR/j^2 + f/j^2}{R^2 + j^2},$ $G = \frac{aRj^2 - bj^2 - cR + d + fR/j^2}{R^2 + j^2}.$ <p>Check: $B + C + E = a, \quad A - CR - G = b - aR.$</p>	131
$\frac{aD^4 + bD^3 + cD^2 + dD + f}{D(D + R)(D^2 + 2rD + h)}$	$A\tau + B + C e^{-R\tau} + \left(l \cos j\tau + n \frac{\sin j\tau}{j} \right) e^{-r\tau},$ <p>where:</p> $A = \frac{f}{Rh}, \quad B = \frac{d}{Rh} - \frac{f}{Rh} \left(\frac{1}{R} + \frac{2r}{h} \right),$ $C = \frac{aR^2 - bR + c - d/R + f/R^2}{M},$ $Ml = a(h - 2Rr) + bR - c + \frac{d}{h}(2r - R) + \frac{f}{h^2}(h + 2Rr - 4r^2),$ $Mn = a(2Rr^2 - hR - hr) + b(h - Rr) + c(R - r) + \frac{d}{h}(2r^2 - Rr - h) + \frac{f}{h^2}\{2r^2(R - 2r) + h(3r - R)\},$ <p>and</p> $M = R^2 - 2Rr + h.$ <p>Check: $B + C + l = a, \quad A + BR + l(R - r) + n = b - 2ar.$</p>	132
$\frac{aD^4 + bD^3 + cD^2 + dD + f}{D^2(D + R)(D + r)}$	$\frac{1}{2}A\tau^2 + B\tau + C + K e^{-R\tau} - k e^{-r\tau},$ <p>where:</p> $A = \frac{f}{Rr}, \quad B = \frac{d}{Rr} - \frac{f}{Rr} \left(\frac{1}{R} + \frac{1}{r} \right),$ $RrC = c - d \left(\frac{1}{R} + \frac{1}{r} \right) + \frac{f}{Rr} \left(\frac{r}{R} + 1 + \frac{R}{r} \right),$ $K = \frac{aR - b + c/R - d/R^2 + f/R^3}{R - r},$ $k = \frac{ar - b + c/r - d/r^2 + f/r^3}{R - r}.$ <p>Check: $C + K - k = a.$</p>	133

TABLE 3—continued

(4) Fractions with denominators quartic in D —continued

Operational expression $\varphi(D)$	Equivalent function $F(\tau)$	Number
$\frac{aD^4 + bD^3 + cD^2 + dD + f}{D^2(D+r)^2}$	$\frac{f}{2r^2} \tau^2 + \left(\frac{d}{r^2} - \frac{2f}{r^3} \right) \tau + \left(\frac{c}{r^2} - \frac{2d}{r^3} + \frac{3f}{r^4} \right) +$ $+ \left\{ \left(a - \frac{c}{r^2} + \frac{2d}{r^3} - \frac{3f}{r^4} \right) - \left(ar - b + \frac{c}{r} - \frac{d}{r^2} + \frac{f}{r^3} \right) \tau \right\} e^{-r\tau}$	134
$\frac{aD^4 + bD^3 + cD^2 + dD + f}{D^2(D^2 + j^2)}$	$\frac{f}{2j^2} \tau^2 + \frac{d}{j^2} \tau + \left(\frac{c}{j^2} - \frac{f}{j^4} \right) + \left(a - \frac{c}{j^2} + \frac{f}{j^4} \right) \cos j\tau +$ $+ \left(b - \frac{d}{j^2} \right) \frac{\sin j\tau}{j}$	135
$\frac{aD^4 + bD^3 + cD^2 + dD + f}{D^2(D^2 + 2rD + h)}$	$\frac{1}{2}A\tau^2 + B\tau + C + \left(l \cos j\tau + n \frac{\sin j\tau}{j} \right) e^{-r\tau},$ <p>where:</p> $A = \frac{f}{h}, \quad B = \frac{d}{h} - \frac{2fr}{h^2},$ $C = \frac{c}{h} - \frac{2dr}{h^2} + \frac{f}{h^3} (4r^2 - h),$ $l = a - \frac{c}{h} + \frac{2dr}{h^2} - \frac{f}{h^3} (4r^2 - h),$ $n = -ar + b - \frac{cr}{h} + \frac{d}{h^2} (2r^2 - h) + \frac{fr}{h^3} (3h - 4r^2).$ <p>Check: $C + l = a, \quad B - lr + n = b - 2ar.$</p>	136
$\frac{aD^4 + bD^3 + cD^2 + dD + f}{D^3(D+R)}$	$\frac{f}{6R} \tau^3 + \frac{1}{2} \left(\frac{d}{R} - \frac{f}{R^2} \right) \tau^2 + \left(\frac{c}{R} - \frac{d}{R^2} + \frac{f}{R^3} \right) \tau +$ $+ \left(\frac{b}{R} - \frac{c}{R^2} + \frac{d}{R^3} - \frac{f}{R^4} \right) + \left(a - \frac{b}{R} + \frac{c}{R^2} - \frac{d}{R^3} + \frac{f}{R^4} \right) e^{-R\tau}$	137
$\frac{aD^4 + bD^3 + cD^2 + dD + f}{D^4}$	$a + b\tau + \frac{1}{2}c\tau^2 + \frac{1}{6}d\tau^3 + \frac{1}{24}f\tau^4$	138

TABLE 4

Operational Fractions, with Denominators Quintic in D , Reduced to Simpler Fractions

(A) No apparent zero roots in denominators	Number
<p>Denominator with at least one single real root:</p> $\frac{aD^5 + bD^4 + cD^3 + dD^2 + fD + g}{(D + R)(D^4 + BD^3 + CD^2 + ED + G)} = \frac{kD}{D + R} + \frac{a_1D^4 + b_1D^3 + c_1D^2 + d_1D + f_1}{D^4 + BD^3 + CD^2 + ED + G},$ <p>where:</p> $k = \frac{aR^2 - bR + c - d/R + f/R^2 - g/R^3}{R^2 - BR + C - E/R + G/R^2}, \quad f_1 = g/R,$ $d_1 = \frac{f - f_1 - kG}{R}, \quad c_1 = \frac{d - d_1 - kE}{R}, \quad b_1 = \frac{c - c_1 - kC}{R}, \quad a_1 = \frac{b - b_1 - kB}{R}.$ <p>Check: $k + a_1 = a$.</p>	139
<p>Denominator with a double real and a triple real root:</p> $\frac{aD^5 + bD^4 + cD^3 + dD^2 + fD + g}{(D + R)^2(D + r)^3} = \frac{a_1D^2 + b_1D + c_1}{(D + R)^2} + \frac{a_2D}{D + r} + \frac{b_2D}{(D + r)^2} + \frac{c_2D}{(D + r)^3},$ <p>where:</p> $c_1 = g/r^3, \quad c_2 = \frac{ar^4 - br^3 + cr^2 - dr + f - g/r}{(R - r)^2},$ $b_2(R - r)^3 = 2ar^3(r - 2R) + br^2(3R - r) - 2cRr + d(R + r) - 2f + \frac{g}{r^2}(3r - R),$ $a_2(R - r)^4 = ar^2(6R^2 - 4Rr + r^2) - 3bR^2r + cR(R + 2r) - d(2R + r) + 3f - \frac{g}{r^3}(R^2 - 4Rr + 6r^2),$ $a_1 = a - a_2, \quad b_1 = b - 3ar - a_2(2R - r) - b_2.$	140
<p>Denominator with a pair of imaginary roots and a triple real root:</p> $\frac{aD^5 + bD^4 + cD^3 + dD^2 + fD + g}{(D^2 + J^2)(D + r)^3} = \frac{a_1D^2 + b_1D + c_1}{D^2 + J^2} + \frac{a_2D}{D + r} + \frac{b_2D}{(D + r)^2} + \frac{c_2D}{(D + r)^3},$ <p>where:</p> $c_1 = g/r^3, \quad c_2 = \frac{ar^4 - br^3 + cr^2 - dr + f - g/r}{J^2 + r^2},$ $b_2(J^2 + r^2)^2 = -2ar^3(2J^2 + r^2) + br^2(3J^2 + r^2) - 2cJ^2 + d(J^2 - r^2) + 2fr - \frac{g}{r^2}(J^2 + 3r^2),$ $a_2(J^2 + r^2)^3 = ar^2(6J^4 + 3J^2r^2 + r^4) - brJ^2(3J^2 - r^2) + cJ^2(J^2 - 3r^2) + dr(3J^2 - r^2) -$ $- f(J^2 - 3r^2) - \frac{g}{r^3}(J^4 + 3J^2r^2 + 6r^4),$ $a_1 = a - a_2, \quad b_1 = b - 3ar + a_2r - b_2.$	141

TABLE 4—continued

(A) No apparent zero roots—continued	Number
<p>Denominator with a triple real root and any two remaining roots:</p> $\frac{aD^5 + bD^4 + cD^3 + dD^2 + fD + g}{(D^2 + 2RD + H)(D + r)^3} = \frac{a_1D^2 + b_1D + c_1}{D^2 + 2RD + H} + \frac{a_2D}{D + r} + \frac{b_2D}{(D + r)^2} + \frac{c_2D}{(D + r)^3},$ <p>where:</p> $c_1 = g/r^3, \quad c_2 = \frac{ar^4 - br^3 + cr^2 - dr + f - g/r}{H - 2Rr + r^2},$ $b_2(H - 2Rr + r^2)^2 = -2ar^3(2H - 3Rr + r^2) + 6r^2(3H - 4Rr + r^2) + 2cr(Rr - H) + d(H - r^2) - 2f(R - r) - \frac{g}{r^2}(H - 4Rr + 3r^2),$ $a_2(H - 2Rr + r^2)^3 = ar^2\{6H^2 - Hr(16R - 3r) + r^2(12R^2 - 6Rr + r^2)\} - br\{3H^2 - Hr(6R + r) + 4R^2r^2\} + c\{H^2 - 3r^2H + 2Rr^3\} - d\{H(2R - 3r) + r^3\} + f\{4R^2 - 6Rr + 3r^2 - H\} - \frac{g}{r^3}\{H^2 - 3Hr(2R - r) + 2r^2(6R^2 - 8Rr + 3r^2)\},$ $a_1 = a - a_2, \quad b_1 = b - 3ar - a_2(2R - r) - b_2.$	142
<p>(B) Single or multiple zero roots in denominators</p>	
<p>Denominator with a single zero root and any non-zero remaining roots:</p> $\frac{aD^5 + bD^4 + cD^3 + dD^2 + fD + g}{D(D^4 + BD^3 + CD^2 + ED + G)} = \frac{g/G}{D} + \frac{aD^4 + \left(b - \frac{g}{G}\right)D^3 + \left(c - \frac{gB}{G}\right)D^2 + \left(d - \frac{gC}{G}\right)D + \left(f - \frac{gE}{G}\right)}{D^4 + BD^3 + CD^2 + ED + G}$	143
<p>Denominator with a double zero root and a triple real root:</p> $\frac{aD^5 + bD^4 + cD^3 + dD^2 + fD + g}{D^2(D + r)^3} = \frac{g/r^3}{D^2} + \left(\frac{f}{r^3} - \frac{3g}{r^4}\right)\frac{1}{D} + \left(\frac{d}{r^3} - \frac{3f}{r^4} + \frac{6g}{r^5}\right) + \left(a - \frac{d}{r^3} + \frac{3f}{r^4} - \frac{6g}{r^5}\right)\frac{D}{D + r} - \left(2ar - b + \frac{d}{r^2} - \frac{2f}{r^3} + \frac{3g}{r^4}\right)\frac{D}{(D + r)^2} + \left(ar^2 - br + c - \frac{d}{r} + \frac{f}{r^2} - \frac{g}{r^3}\right)\frac{D}{(D + r)^3}$	144

TABLE 4—continued

(B) Multiple zero roots—continued	Number
<p>Denominator with a triple zero root and a double real root:</p> $\frac{aD^5 + bD^4 + cD^3 + dD^2 + fD + g}{D^3(D+r)^2} = \frac{g/r^2}{D^3} + \left(\frac{f}{r^2} - \frac{2g}{r^3}\right) \frac{1}{D^2} + \left(\frac{d}{r^2} - \frac{2f}{r^3} + \frac{3g}{r^4}\right) \frac{1}{D} +$ $+ \frac{aD^2 + \left(b - \frac{d}{r^2} + \frac{2f}{r^3} - \frac{3g}{r^4}\right) D + \left(c - \frac{2d}{r} + \frac{3f}{r^2} - \frac{4g}{r^3}\right)}{(D+r)^2}$	145
<p>Denominator with a triple zero root and a pair of imaginary roots:</p> $\frac{aD^5 + bD^4 + cD^3 + dD^2 + fD + g}{D^3(D^2 + J^2)} = \frac{g/J^2}{D^3} + \frac{f/J^2}{D^2} + \left(\frac{d}{J^2} - \frac{g}{J^4}\right) \frac{1}{D} +$ $+ \frac{aD^2 + \left(b - \frac{d}{J^2} + \frac{g}{J^4}\right) D + \left(c - \frac{f}{J^2}\right)}{D^2 + J^2}$	146
<p>Denominator with a triple zero root and any two remaining roots:</p> $\frac{aD^5 + bD^4 + cD^3 + dD^2 + fD + g}{D^3(D^2 + 2RD + H)} = \frac{g/H}{D^3} + \left(\frac{f}{H} - \frac{2gR}{H^2}\right) \frac{1}{D^2} + \left(\frac{d}{H} - \frac{2fR}{H^2} + g \frac{4R^2 - H}{H^3}\right) \frac{1}{D} +$ $+ \frac{aD^2 + \left(b - \frac{d}{H} + \frac{2fR}{H^2} - g \frac{4R^2 - H}{H^3}\right) D + \left(c - \frac{2dR}{H} + f \frac{4R^2 - H}{H^2} - 4gR \frac{2R^2 - H}{H^3}\right)}{D^2 + 2RD + H}$	147
<p>Denominator with a quadruple zero root and a single real root:</p> $\frac{aD^5 + bD^4 + cD^3 + dD^2 + fD + g}{D^4(D+R)} = \frac{g/R}{D^4} + \left(\frac{f}{R} - \frac{g}{R^2}\right) \frac{1}{D^3} + \left(\frac{d}{R} - \frac{f}{R^2} + \frac{g}{R^3}\right) \frac{1}{D^2} +$ $+ \left(\frac{c}{R} - \frac{d}{R^2} + \frac{f}{R^3} - \frac{g}{R^4}\right) \frac{1}{D} + \left(\frac{b}{R} - \frac{c}{R^2} + \frac{d}{R^3} - \frac{f}{R^4} + \frac{g}{R^5}\right) +$ $+ \left(a - \frac{b}{R} + \frac{c}{R^2} - \frac{d}{R^3} + \frac{f}{R^4} - \frac{g}{R^5}\right) \frac{D}{D+R}$	148

TABLE 5

Operational Fractions, with Denominators Sextic in D , Reduced to Simpler Fractions

(A) No apparent zero roots in denominators	Number
<p>Denominator with at least one single pair of imaginary roots:</p> $\frac{aD^6 + bD^5 + cD^4 + dD^3 + fD^2 + gD + k}{(D^2 + J^2)(D^4 + BD^3 + CD^2 + ED + G)} = \frac{a_1D^2 + b_1D}{D^2 + J^2} + \frac{a_2D^4 + b_2D^3 + c_2D^2 + d_2D + f_2}{D^4 + BD^3 + CD^2 + ED + G},$ <p>where:</p> $a_1 = \frac{(aJ^4 - cJ^2 + f - k/J^2)(J^4 - CJ^2 + G) + (bJ^4 - dJ^2 + g)(BJ^2 - E)}{(J^4 - CJ^2 + G)^2 + J^2(BJ^2 - E)^2},$ $b_1 = \frac{(bJ^4 - dJ^2 + g)(J^4 - CJ^2 + G) - J^2(aJ^4 - cJ^2 + f - k/J^2)(BJ^2 - E)}{(J^4 - CJ^2 + G)^2 + J^2(BJ^2 - E)^2},$ $a_2 = a - a_1, \quad b_2 = b - b_1 - Ba_1, \quad f_2 = k/J^2,$ $c_2 = c - aJ^2 - Bb_1 + (J^2 - C)a_1, \quad d_2 = d - bJ^2 + (J^2 - C)b_1 + (BJ^2 - E)a_1.$ <p>Check: $Gb_1 + J^2d_2 = g$.</p>	149
<p>Denominator with at least one double real root:</p> $\frac{aD^6 + bD^5 + cD^4 + dD^3 + fD^2 + GD + k}{(D + R)^2(D^4 + BD^3 + CD^2 + ED + G)} = \frac{a_1D^2 + b_1D}{(D + R)^2} + \frac{a_2D^4 + b_2D^3 + c_2D^2 + d_2D + f_2}{D^4 + BD^3 + CD^2 + ED + G},$ <p>where:</p> $a_1 = \frac{aA + b\alpha - c\beta + d\gamma - f\delta + g\theta - k\Gamma}{(R^4 - BR^3 + CR^2 - ER + G)^2},$ $b_1 = R^2 \frac{-a\alpha + b\beta - c\gamma + d\delta - f\theta + g\Gamma - kK}{(R^4 - BR^3 + CR^2 - ER + G)^2},$ $A = R^4(R^4 - 2BR^3 + 3CR^2 - 4ER + 5G), \quad \alpha = R^3(BR^3 - 2CR^2 + 3ER - 4G),$ $\beta = R^2(R^4 - CR^2 + 2ER - 3G), \quad \gamma = R(2R^4 - BR^3 + ER - 2G),$ $\delta = 3R^4 - 2BR^3 + CR^2 - G, \quad \theta = 4R^3 - 3BR^2 + 2CR - E,$ $\Gamma = 5R^2 - 4BR + 3C - 2E/R + G/R^2, \quad K = 6R - 5B + 4C/R - 3E/R^2 + 2G/R^3,$ $a_2 = a - a_1, \quad b_2 = (b - 2aR) + (2R - B)a_1 - b_1,$ $c_2 = (c - 2bR + 3aR^2) + (2R - B)b_1 - (3R^2 - 2BR + C)a_1,$ $d_2 = (d - 2cR + 3bR^2 - 4aR^3) - (3R^2 - 2BR + C)b_1 + (4R^3 - 3BR^2 + 2CR - E)a_1,$ $f_2 = k/R^2.$ <p>Check: $b_1G + d_2R^2 + 2f_2R = g$.</p>	150

TABLE 5—continued

(A) No apparent zero roots—continued	Number
<p>Denominator factorized into a quadratic and a quartic with no common roots:</p> $\frac{aD^6 + bD^5 + cD^4 + dD^3 + fD^2 + gD + k}{(D^2 + 2RD + H)(D^4 + BD^3 + CD^2 + ED + G)} = \frac{a_1D^2 + b_1D}{D^2 + 2RD + H} + \frac{a_2D^4 + b_2D^3 + c_2D^2 + d_2D + f_2}{D^4 + BD^3 + CD^2 + ED + G},$ <p>where:</p> $a_1 = \frac{aA + b\alpha - c\beta + d\gamma - f\delta + g\theta - k\Gamma}{H(\theta^2 - \delta\Gamma)}, \quad b_1 = \frac{-a\alpha + b\beta - c\gamma + d\delta - f\theta + g\Gamma - kK}{\theta^2 - \delta\Gamma},$ $A = H^4 - 2BRH^3 + CH^2(4R^2 - H) - 4ERH(2R^2 - H) + G(H^2 - 12R^2H + 16R^4),$ $\alpha = BH^3 - 2CRH^2 + EH(4R^2 - H) - 4GR(2R^2 - H), \quad \beta = H^3 - CH^2 + 2ERH - G(4R^2 - H),$ $\gamma = 2RH^2 - BH^2 + EH - 2GR, \quad \delta = H(4R^2 - H) - 2BRH + CH - G,$ $\theta = 4R(2R^2 - H) - B(4R^2 - H) + 2CR - E,$ $H\Gamma = (H^2 - 12R^2H + 16R^4) - 4BR(2R^2 - H) + C(4R^2 - H) - 2ER + G,$ $H^2K = 2R(3H^2 - 16R^2H + 16R^4) - B(H^2 - 12R^2H + 16R^4) + 4CR(2R^2 - H) - E(4R^2 - H) + 2GR.$ $a_2 = a - a_1, \quad b_2 = (b - 2aR) + (2R - B)a_1 - b_1, \quad f_2 = k/H,$ $c_2 = \{c - 2Rb + (4R^2 - H)a\} + (2R - B)b_1 + (H - 4R^2 + 2BR - C)a_1,$ $d_2 = \{d - 2Rc + (4R^2 - H)b - 4R(2R^2 - H)a\} + (H - 4R^2 + 2BR - C)b_1 + \{4R(2R^2 - H) - B(4R^2 - H) + 2CR - E\}a_1.$ <p>Check: $b_1G + d_2H + 2f_2R = g$.</p>	151
<p>Denominator with two triple real roots:</p> $\frac{aD^6 + bD^5 + cD^4 + dD^3 + fD^2 + gD + k}{(D + R)^3(D + r)^3} = A + \frac{a_1D}{D + R} + \frac{b_1D}{(D + R)^2} + \frac{c_1D}{(D + R)^3} + \frac{a_2D}{D + r} + \frac{b_2D}{(D + r)^2} + \frac{c_2D}{(D + r)^3},$ <p>where:</p> $(R - r)^5a_1 = aR^3(R^2 - 5Rr + 10r^2) - 6bR^2r^2 + 3cRr(R + r) - d(R^2 + 4Rr + r^2) + 3f(R + r) - 6g + \frac{k}{R^3}(10R^2 - 5Rr + r^2),$ $(R - r)^4b_1 = aR^4(5r - 2R) + bR^3(R - 4r) + 3cR^2r - dR(R + 2r) + f(2R + r) - 3g + \frac{k}{R^2}(4R - r),$ $(R - r)^3c_1 = aR^5 - bR^4 + cR^3 - dR^2 + fR - g + k/R, \quad A = k/R^3r^3,$ <p>and analogous formulae for a_2, b_2, c_2.</p> <p>Check: $A + a_1 + a_2 = a, \quad A(R + r) + b_1 + b_2 + a_1r + a_2R = b - 2a(R + r)$.</p>	152

TABLE 5—continued

(A) No apparent zero roots—continued	Number
<p>Denominator with a single and a quintuple root:</p> $\frac{aD^6 + bD^5 + cD^3 + dD^2 + fD^2 + gD + k}{(D + R)(D + r)^5} = \frac{AD}{D + R} + \frac{a_1D^5 + b_1D^4 + c_1D^3 + d_1D^2 + f_1D + g_1}{(D + r)^5},$ <p>where:</p> $A = \frac{aR^5 - bR^4 + cR^3 - dR^2 + fR - g + k/R}{(R - r)^5}, \quad g_1 = \frac{k}{R}, \quad f_1 = \frac{g - g_1 - Ar^5}{R},$ $d_1 = \frac{f - f_1 - 5Ar^4}{R}, \quad c_1 = \frac{d - d_1 - 10Ar^3}{R}, \quad b_1 = \frac{c - c_1 - 10Ar^2}{R}, \quad a_1 = \frac{b - b_1 - 5Ar}{R},$ <p>Check: $A + a_1 = a$.</p>	153
<p>(B) Single or multiple zero roots in denominators</p>	
<p>Denominator with a single zero and a quintuple root:</p> $\frac{aD^6 + bD^5 + cD^4 + dD^3 + fD^2 + gD + k}{D(D + r)^5} =$ $\frac{k/r^5}{D} + \frac{aD^5 + (b - k/r^5)D^4 + (c - 5k/r^4)D^3 + (d - 10k/r^3)D^2 + (f - 10k/r^2)D + (g - 5k/r)}{(D + r)^5}$	154
<p>Denominator with a single zero, single real and a double pair of any other roots:</p> $\frac{aD^6 + bD^5 + cD^4 + dD^3 + fD^2 + gD + k}{D(D + R)(D^2 + 2rD + h)^2} = \frac{A}{D} + \frac{BD}{D + R} + \frac{a_1D^4 + b_1D^3 + c_1D^2 + d_1D + f_1}{(D^2 + 2rD + h)^2},$ <p>where:</p> $A = \frac{k}{Rh^2}, \quad B = \frac{aR^4 - bR^3 + cR^2 - dR + f - g/R + k/R^2}{(R^2 - 2Rr + h)^2}, \quad f_1 = \frac{g - Ah(h + 4Rr)}{R},$ $d_1 = \frac{f - f_1 - 2A(Rh + 2rh + 2Rr^2) - Bh^2}{R}, \quad c_1 = \frac{d - d_1 - 2A(h + 2Rr + 2r^2) - 4Brh}{R},$ $b_1 = \frac{c - c_1 - A(R + 4r) - 2B(h + 2r^2)}{R}, \quad a_1 = \frac{b - b_1 - A - 4Br}{R}.$ <p>Check: $B + a_1 = a$.</p>	155

TABLE 5—continued

(B) Multiple zero roots —continued	Number
<p>Denominator with a double zero, single real and triple real root:</p> $\frac{aD^6 + bD^5 + cD^4 + dD^3 + fD^2 + gD + k}{D^2(D+R)(D+r)^3} = \frac{A}{D^2} + \frac{B}{D} + \frac{CD}{D+R} + \frac{a_1D^3 + b_1D^2 + c_1D + d_1}{(D+r)^3},$ <p>where:</p> $A = \frac{k}{Rr^3}, \quad B = \frac{g}{Rr^3} - k \frac{3R+r}{R^2r^4}, \quad C = \frac{aR^3 - bR^2 + cR - d + f/R - g/R^2 + k/R^3}{(R-r)^3},$ $d_1 = \frac{f - 3Ar(R+r) - Br^2(3R+r)}{R}, \quad c_1 = \frac{d - d_1 - A(R+3r) - 3Br(R+r) - Cr^3}{R},$ $b_1 = \frac{c - c_1 - A - B(R+3r) - 3Cr^2}{R}, \quad a_1 = \frac{b - b_1 - B - 3Cr}{R}.$ <p>Check: $a_1 + C = a$.</p>	156
<p>Denominator with a double zero and a double pair of any other roots:</p> $\frac{aD^6 + bD^5 + cD^4 + dD^3 + fD^2 + gD + k}{D^2(D^2 + 2rD + h)^2} = \frac{A}{D^2} + \frac{B}{D} +$ $+ \frac{aD^4 + (b-B)D^3 + (c-A-4Br)D^2 + \{d-4Ar-2B(h+2r^2)\}D + \{f-2A(h+2r^2)-4Brh\}}{(D^2 + 2rD + h)^2},$ $A = \frac{k}{h^2}, \quad B = \frac{g}{h^2} - \frac{4kr}{h^3}.$	157
<p>Denominator with a triple zero and triple real root:</p> $\frac{aD^6 + bD^5 + cD^4 + dD^3 + fD^2 + gD + k}{D^3(D+r)^3} =$ $\frac{A}{D^3} + \frac{B}{D^2} + \frac{C}{D} + \frac{aD^3 + (b-C)D^2 + (c-B-3Cr)D + (d-A-3Br-3Cr^2)}{(D+r)^3},$ $A = \frac{k}{r^3}, \quad B = \frac{g}{r^3} - \frac{3k}{r^4}, \quad C = \frac{f}{r^3} - \frac{3g}{r^4} + \frac{6k}{r^5}.$	158

APPENDIX

Examples of Solutions of Differential Equations and Response Problems by Using the Formulae of Tables 1 to 5

The purpose of the following examples is to show how to apply the formulae correctly, to exhibit advantages in avoiding all the usual drudgery of resolving operational expressions into partial fractions, and finally to give a few interesting analytical discussions of response problems thus solved. Very simple, trivial or well-known problems have been excluded, but greatly complicated ones have also been avoided.

The introductory examples 1 and 2 treat simple differentiation and integration; examples 3 to 5 ordinary differential equations; examples 6 to 11 some response problems which may find immediate application in aeronautics or other branches of engineering. In all these examples the order of operational fractions never exceeds 4, but example 12 shows some applications of the more complex formulae of Tables 4 and 5 (fifth and sixth order fractions).

Example 1.—Find the third derivative of the function

$$F(\tau) = \tau e^{-R\tau} \left(\cos J\tau + \frac{R}{J} \sin J\tau \right). \quad \dots \dots \dots \quad (\text{A.1})$$

Let us denote by $\varphi(D)$, $\varphi_1(D)$, $\varphi_2(D)$ and $\varphi_3(D)$ the operational equivalents of $F(\tau)$, $F'(\tau)$, $F''(\tau)$ and $F'''(\tau)$, respectively. Combining the formulae (24) and (28) of Table 1, we find

$$\varphi(D) = \frac{D^3 + 4RD^2 + (4R^2 - H)D}{(D^2 + 2RD + H)^2}. \quad \dots \dots \dots \quad (\text{A.2})$$

We now use the formula (d) of section 2 and, as $F(0) = 0$, we obtain

$$\varphi_1(D) = \frac{D^4 + 4RD^3 + (4R^2 - H)D^2}{(D^2 + 2RD + H)^2}, \quad \dots \dots \dots \quad (\text{A.3})$$

and it is seen that $F'(0) = \varphi_1(\infty) = 1$. Applying (d) again, we get

$$\varphi_2(D) = -H \frac{3D^3 + 4RD^2 + HD}{(D^2 + 2RD + H)^2}. \quad \dots \dots \dots \quad (\text{A.4})$$

We have $F''(0) = \varphi_2(\infty) = 0$ and, applying (d) once more, we obtain

$$\varphi_3(D) = -H \frac{3D^4 + 4RD^3 + HD^2}{(D^2 + 2RD + H)^2}. \quad \dots \dots \dots \quad (\text{A.5})$$

To determine $F'''(\tau)$, we look for an appropriate formula in Table 3, which is (127), and putting $a = 3$, $b = 4R$, $c = H$, $d = f = 0$, we find $A = 0$, $B = 3$, $B' = -2R$, $C = -3R$, $C' = R^2 - J^2$, and hence

$$F'''(\tau) = H \left\{ (2R\tau - 3) \cos J\tau + \left(\frac{3R}{J} + \frac{J^2 - R^2}{J} \tau \right) \sin J\tau \right\} e^{-R\tau}. \quad \dots \quad (\text{A.6})$$

If the first and second derivatives were also required, we could apply (127) to (A.3) and (A.4), which would yield

$$\left. \begin{aligned} F'(\tau) &= \left(\cos J\tau + \frac{R - H\tau}{J} \sin J\tau \right) e^{-R\tau} \\ F''(\tau) &= -H \left(\tau \cos J\tau + \frac{2 - R\tau}{J} \sin J\tau \right) e^{-R\tau} \end{aligned} \right\}, \dots \dots \dots \quad (\text{A.7})$$

and all results can be obviously checked by direct differentiation. The advantage of the operational method is that the 3rd derivative could be found without determining the 1st and 2nd ones. Simple differentiation by use of operators is seldom shorter than the usual process, and cannot be generally recommended. The reader may notice, however, that each group of formulae in Table 2 contains a series of successive derivatives, and hence this table may often be useful for rapidly finding derivatives (or integrals) of such functions as appear therein.

Example 2.—Find the integral $I = \int_0^\tau F(\tau) d\tau$, the integrand $F(\tau)$ being the function (A.1) of the previous example.

Applying the formula (e) of section 2, we find the operational equivalent of I :

$$\varphi_1(D) = \frac{\varphi(D)}{D} = \frac{D^2 + 4RD + (4R^2 - H)}{(D^2 + 2RD + H)^2}, \quad \dots \dots \dots \quad (A.8)$$

and then, putting in (127) $a = b = 0$, $c = 1$, $d = 4R$, $f = 4R^2 - H$, we obtain at once

$$I = \frac{4R^2 - H}{H^2} + \left\{ \left(\frac{H - 4R^2}{H^2} - \frac{2R\tau}{H} \right) \cos J\tau + \left(R \frac{3H - 4R^2}{H^2} + \frac{H - 2R^2}{H} \tau \right) \frac{\sin J\tau}{J} \right\} e^{-R\tau}. \quad (A.9)$$

This can be checked immediately by direct differentiation but, to determine the integral I by usual methods, without using operational formulae, would be a rather laborious procedure.

If the upper limit of integration were assumed to be (∞) right from the start, only the constant term A of I would have to be determined, and we would obtain

$$\int_0^\infty \tau e^{-R\tau} \left(\cos J\tau + \frac{R}{J} \sin J\tau \right) d\tau = \frac{3R^2 - J^2}{(R^2 + J^2)^2}. \quad \dots \dots \dots \quad (A.10)$$

Example 3.—Solve the system of simultaneous differential equations

$$\left. \begin{aligned} \frac{dx}{d\tau} + \frac{dy}{d\tau} + J(y - x) &= 2aJ \cos J\tau \\ \frac{dy}{d\tau} - \frac{dx}{d\tau} - J(y + x) &= 2aJ \sin J\tau \end{aligned} \right\}, \dots \dots \dots \quad (A.11)$$

assuming initial conditions $x = y = 0$ at $\tau = 0$.

We follow the instruction of section 3, find the operational equivalents of forcing functions from formulae (15) and (19) of Table 1, and obtain the following subsidiary equations:

$$\left. \begin{aligned} (D - J)x + (D + J)y &= 2aJ \frac{D^2}{D^2 + J^2} \\ - (D + J)x + (D - J)y &= 2aJ^2 \frac{D}{D^2 + J^2} \end{aligned} \right\}, \dots \dots \dots \quad (A.12)$$

The main determinant of these equations is $2(D^2 + J^2)$ and hence, if there were no forcing functions, we would have to deal with a simple undamped oscillating system, of natural frequency J . As the forcing functions are simple harmonic of the same frequency, we have a case of resonance, which it would not be too easy to solve by usual methods. Solving the subsidiary equations, however, and interpreting by means of the formula (124), we obtain at once

$$\left. \begin{aligned} \frac{x}{a} \left[= J \frac{D^3 - 2JD^2 - J^2D}{(D^2 + J^2)^2} \right] &= J\tau(\cos J\tau - \sin J\tau) = \theta(\cos \theta - \sin \theta) \\ \frac{y}{a} \left[= J \frac{D^3 + 2JD^2 - J^2D}{(D^2 + J^2)^2} \right] &= J\tau(\cos J\tau + \sin J\tau) = \theta(\cos \theta + \sin \theta) \end{aligned} \right\}, \quad (A.13)$$

where $\theta = J\tau$, for abbreviation.

The subsidiary equations are respectively:

$$(D^4 + 6D^3 + 14D^2 + 14D + 5)x = 2(D^2 + 6D) - 8D, \quad \dots \quad \dots \quad \text{(A.21)}$$

$$(D^4 + 6D^3 + 14D^2 + 16D + 8)y = -2(D^2 + 6D) + 10D, \quad \dots \quad \dots \quad \text{(A.22)}$$

and the solutions become (using formula 122 after factorizing quartics):

$$x \left[= \frac{2D^2 + 4D}{(D+1)^2(D^2 + 4D + 5)} \right] = \tau e^{-\tau} - e^{-2\tau} \sin \tau, \quad \dots \quad \dots \quad \text{(A.23)}$$

$$y \left[= \frac{-2D^2 - 2D}{(D+2)^2(D^2 + 2D + 2)} \right] = \tau e^{-2\tau} - e^{-\tau} \sin \tau. \quad \dots \quad \dots \quad \text{(A.24)}$$

The two solutions are very similar, the two exponentials being simply interchanged. This difference accounts for a different behaviour of two functions, the former reaching only one maximum $x_{\max} \simeq 0.2855$ at $\tau \simeq 1.444$ and then subsiding to 0 without oscillation, while the latter reaches first $y_{\min} \simeq -0.1750$ at $\tau \simeq 1.064$, then $y_{\max} \simeq 0.0156$ at $\tau \simeq 3.835$, and later performs a decaying oscillation. The functions and their derivatives are illustrated in Fig. 2.

Example 5.—Solve the following system of simultaneous differential equations:

$$\left. \begin{aligned} \frac{d^2x}{d\tau^2} + 4 \frac{dx}{d\tau} + 2x - 4 \frac{dy}{d\tau} + 2y &= 0 \\ 4 \frac{dx}{d\tau} + x + \frac{d^2y}{d\tau^2} - 4 \frac{dy}{d\tau} + 3y &= 0 \end{aligned} \right\} \begin{aligned} &\text{with } x_0 = 3, \dot{x}_0 = 0, \\ &y_0 = 0, \dot{y}_0 = 6 \end{aligned} \quad \dots \quad \dots \quad \text{(A.25)}$$

(at $\tau = 0$)

The subsidiary equations are

$$\left. \begin{aligned} (D^2 + 4D + 2)x - (4D - 2)y &= 3(D^2 + 4D) \\ (4D + 1)x + (D^2 - 4D + 3)y &= 18D \end{aligned} \right\}, \quad \dots \quad \dots \quad \dots \quad \text{(A.26)}$$

the main determinant being $(D^2 + 4)(D^2 + 1)$, so that the solution consists of two undamped simple harmonic oscillations, of frequencies 1 and 2. The appropriate formula is (123), and the solutions become:

$$\left. \begin{aligned} x \left[= \frac{3D^4 + 33D^2}{(D^2 + 4)(D^2 + 1)} \right] &= 10 \cos \tau - 7 \cos 2\tau \\ y \left[= \frac{6D^3 + 21D^2 + 24D}{(D^2 + 4)(D^2 + 1)} \right] &= 7 \cos \tau + 6 \sin \tau - 7 \cos 2\tau \end{aligned} \right\} \dots \quad \dots \quad \text{(A.27)}$$

Example 6.—Determine the response of a simple ‘exponential delay unit’ (of gain factor G and time constant t) to a finite parabolic input of duration $2\tau_1$ and maximum value A (parabolic impulse). Find the position and magnitude of the maximum output, for varying time constants t and τ_1 .

The parabolic input I , illustrated in Fig. 3 (small inset diagram) seems to be a good first approximation to a ‘smooth to-and-fro impulse’ as often used in practice (*e.g.*, an ordinary push-pull stick movement applied in flight tests of aircraft). Such an input is represented by the simple formula

$$I = A \left(2 \frac{\tau}{\tau_1} - \frac{\tau^2}{\tau_1^2} \right), \quad \text{for } 0 < \tau < 2\tau_1, \quad \dots \quad \dots \quad \dots \quad \text{(A.28)}$$

so that $I_{\max} = A$ at $\tau = \tau_1$, and for $\tau > 2\tau_1$ the input remains equal to 0. The law governing the output x of our unit is then:

$$G \left(x + t \frac{dx}{d\tau} \right) = I = A \left(2 \frac{\tau}{\tau_1} - \frac{\tau^2}{\tau_1^2} \right), \quad \text{for } 0 < \tau < 2\tau_1, \quad \dots \quad \dots \quad \dots \quad \text{(A.29)}$$

$$G \left(x + t \frac{dx}{d\tau} \right) = 0, \quad \text{for } \tau > 2\tau_1. \quad \dots \quad \dots \quad \dots \quad \text{(A.30)}$$

Let us consider one simple particular case first, *viz.*, $t = 0$. In this case the unit is a simple proportional gear, and we have, for $0 < \tau < 2\tau_1$

$$x = \frac{I}{G}, \text{ the maximum being } \bar{x} = \frac{I_{\max}}{G} = \frac{A}{G}, \text{ at } \tau = \tau_1. \quad (\text{A.31})$$

In the general case, it will be convenient to introduce the auxiliary notation

$$R = 1/t = G/k, \quad \dots \dots \dots \dots \dots \dots \dots \quad (\text{A.32})$$

where R may be termed 'damping factor' of the e.d. unit. The equation (A.29) can then be written in the following operational form (replacing the input function in the right-hand part by its operational equivalent by means of formulae 2 and 3 of Table 1):

$$k(D + R)x = \frac{2A}{\tau_1^2} \frac{\tau_1 D - 1}{D^2}, \quad \dots \dots \dots \dots \dots \dots \dots \quad (\text{A.33})$$

and the solution (valid for $0 < \tau < 2\tau_1$) will be found immediately by using formula (112) of Table 3:

$$x \left[= \frac{2A}{k\tau_1^2} \frac{\tau_1 D - 1}{D^2(D + R)} \right] = \frac{2A}{kRz_1^2} \left\{ (1 + z_1)(z - 1 + e^{-z}) - \frac{1}{2}z^2 \right\}, \quad \dots \dots \dots \quad (\text{A.34})$$

where, for abbreviation, we have introduced auxiliary symbols:

$$z = R\tau, \quad z_1 = R\tau_1 = \tau_1/t. \quad \dots \dots \dots \dots \dots \quad (\text{A.35})$$

Similarly, the first derivative of x will be (using formula 101)

$$\frac{dx}{d\tau} \left[= \frac{2A}{k\tau_1^2} \frac{\tau_1 D - 1}{D(D + R)} \right] = \frac{2A}{kz_1^2} \left\{ (1 + z_1)(1 - e^{-z}) - z \right\}. \dots \dots \dots \quad (\text{A.36})$$

Initially, both x and $dx/d\tau$ increase from 0 to positive values. However, at $\tau = 2\tau_1$ (end of input), we have

$$x_e = \frac{2A}{kRz_1^2} (1 + e^{-2z_1})(z_1 - \tanh z_1) > 0, \quad \left(\frac{dx}{d\tau} \right)_e = -Rx_e < 0, \quad (\text{A.37})$$

so that $dx/d\tau$ has changed sign, and x must have reached a maximum before the input has ceased. If the maximum occurs at $z_m = R\tau_m$, then z_m must make (A.36) equal to 0, hence

$$1 + z_1 = \frac{z_m}{1 - e^{-z_m}}. \quad \dots \dots \dots \dots \dots \dots \dots \quad (\text{A.38})$$

If z_1 is known, this equation can only be solved for z_m by trial and error, or by any other approximate method. It is easily seen, however, that there is only one solution for z_m (whatever the value of z_1), and that

$$z_1 < z_m < 2z_1, \quad \dots \dots \dots \dots \dots \dots \dots \quad (\text{A.39})$$

so that the maximum occurs during the second half of the input duration. A few sample response curves (for $z_1 = 1, 2$ and 3) are shown in Fig. 3a, where the ordinate is conveniently chosen as x/\bar{x} . The thick parts of the curves correspond to (A.34), while the continuing thin parts have been obtained by solving (A.30), the solution being obviously

$$x = x_e e^{-R(\tau - 2\tau_1)}. \quad \dots \dots \dots \dots \dots \dots \dots \quad (\text{A.40})$$

To obtain general characteristics of the response for variable R and τ_1 , it is convenient to tabulate z_1 and z_m from (A.38), whereupon the ratio $z_m/z_1 = \tau_m/\tau_1$ can be plotted against z_1 (Fig. 3b). A simple formula for x_{\max} may be obtained by combining (A.34) and (A.38), as follows:

$$x_{\max} = \frac{A}{kR} \frac{z_m}{z_1} \left(2 - \frac{z_m}{z_1} \right). \quad \dots \dots \dots \dots \dots \dots \dots \quad (\text{A.41})$$

This can be presented in two alternative forms, comparing the maximum output obtained here to either of the corresponding maxima in two particular limiting cases:

(a) *Limiting case* $R \rightarrow \infty$.—This is equivalent to $t = 0$, if G is supposed to be a given constant (cf. A.32). The case has been considered already (proportional gear with no delay), and the respective maximum has been given by (A.31). We have thus

$$\frac{x_{\max}}{\bar{x}} = \frac{z_m}{z_1} \left(2 - \frac{z_m}{z_1} \right) \quad (G \text{ assumed constant}) \quad \dots \quad \dots \quad \dots \quad \dots \quad (A.42)$$

(b) *Limiting case* $R = 0$, i.e., $t = \infty$ and $G = 0$, the assumption being now that k is a given constant. The equation (A.29) then becomes

$$k \frac{dx}{d\tau} = I = A \left(\frac{2\tau}{\tau_1} - \frac{\tau^2}{\tau_1^2} \right); \quad (0 < \tau < 2\tau_1) \quad \dots \quad \dots \quad \dots \quad \dots \quad (A.43)$$

our unit becomes a simple integrator, and we obtain

$$x = \frac{A\tau_1}{k} \left(\frac{\tau^2}{\tau_1^2} - \frac{\tau^3}{3\tau_1^3} \right) \dots \dots \dots \dots \dots \dots \dots \dots \dots (A.44)$$

In this case the maximum output x^* , reached at $\tau = 2\tau_1$, becomes

$$x^* = \frac{4}{3} \frac{A\tau_1}{k}, \quad \dots \quad \dots \quad \dots \quad \dots \quad \dots \quad \dots \quad \dots \quad \dots \quad (A.45)$$

and we get from (A.41) and (A.45)

$$\frac{x_{\max}}{x^*} = \frac{3}{4z_1} \frac{z_m}{z_1} \left(2 - \frac{z_m}{z_1} \right) \quad (k \text{ assumed constant}) \quad \dots \quad \dots \quad \dots \quad \dots \quad (A.46)$$

The formulae (A.42) and (A.46) are illustrated by curves in Fig. 3b, where an additional curve represents the ratio x_i/\bar{x} , obtained by combining (A.37) and (A.31), and all quantities are plotted against $z_1 = R\tau_1 = \tau_1/t$. This ratio of two time constants is seen to be the only parameter on which the form of the response depends.

Example 7.—Consider the previous problem (example 6), replacing the parabolic input by one proportional to $\tau e^{-r\tau}$.

We may write the formula for input:

$$I = v\tau e^{-r\tau}, \quad dI/d\tau = v(1 - r\tau) e^{-r\tau}, \quad \dots \quad \dots \quad \dots \quad \dots \quad (A.47)$$

so that v is the initial rate of increase of I . The input is illustrated by a small inset diagram in Fig. 4b. The maximum value A of the input occurs at

$$\tau_1 = 1/r \quad \dots \quad \dots \quad \dots \quad \dots \quad \dots \quad \dots \quad \dots \quad \dots \quad (A.48)$$

and is obtained as

$$A = \frac{v\tau_1}{e} = \frac{v}{er} \quad \dots \quad \dots \quad \dots \quad \dots \quad \dots \quad \dots \quad \dots \quad \dots \quad (A.49)$$

The input increases originally from 0 to A , in a way rather similar to that of the parabolic input (Fig. 3b) but, instead of falling back to 0 at $\tau = 2\tau_1$, it decreases slowly, reaching 0 at infinity. The differential equation for the output is now, for all positive values of τ

$$G \left(x + t \frac{dx}{d\tau} \right) = I = v\tau e^{-r\tau} \quad \dots \quad \dots \quad \dots \quad \dots \quad \dots \quad \dots \quad \dots \quad \dots \quad (A.50)$$

Let us consider again the simple particular case $t = 0$ first. The unit is a simple proportional gear, and we have

$$x = \frac{I}{G}, \quad \text{the maximum being } \bar{x} = \frac{I_{\max}}{G} = \frac{A}{G}, \quad \text{at } \tau = \tau_1 \dots \dots \dots \quad (A.51)$$

our unit is a simple integrator, so that we obtain (*cf.* formulae 40 or 98)

$$x \left[= \frac{v}{k(D+r)^2} \right] = \frac{v}{kr^2} \left\{ 1 - (1+r\tau) e^{-r\tau} \right\}, \quad \dots \quad \dots \quad \dots \quad (A.61)$$

and the maximum output, reached when $\tau \rightarrow \infty$, becomes

$$x^* = \frac{v}{kr^2} = \frac{e^2 A^2}{kv}. \quad \dots \quad \dots \quad \dots \quad \dots \quad \dots \quad \dots \quad \dots \quad (A.62)$$

We then get from (A.58) and (A.62)

$$\frac{x_{\max}}{x^*} = \frac{\gamma r^2}{R(R-r)} e^{-z_m/z_1} = \frac{z_m}{z_1^2} e^{-z_m/z_1}. \quad \dots \quad \dots \quad \dots \quad \dots \quad (A.63)$$

The formulae (A.59) and (A.63) are illustrated by curves in Fig. 4b, the abscissa being still $z_1 = R\tau_1 = \tau_1/t$, the only parameter on which the form of response depends.

Example 8.—Find the response of a simple exponential delay unit (of gain factor G and time constant t) to a simple harmonic (sinusoidal) input of amplitude A and periodic time T . In particular, find whether there is any transient overshoot of the output maxima over its ultimate steady amplitude.

The differential equation for the output x ,

$$G \left(x + t \frac{dx}{d\tau} \right) = A \sin 2\pi\tau/T, \quad \dots \quad \dots \quad \dots \quad \dots \quad \dots \quad \dots \quad \dots \quad (A.64)$$

can also be written, putting

$$R = 1/t = G/k, \quad \text{and} \quad j = 2\pi/T, \quad \dots \quad \dots \quad \dots \quad \dots \quad (A.65)$$

in the following form, more convenient for using our tables:

$$k \left(\frac{dx}{d\tau} + Rx \right) = A \sin j\tau, \quad \dots \quad \dots \quad \dots \quad \dots \quad \dots \quad \dots \quad \dots \quad (A.66)$$

or in the operational form:

$$k(D+R)x = Aj \frac{D}{D^2+j^2}. \quad \dots \quad \dots \quad \dots \quad \dots \quad \dots \quad \dots \quad \dots \quad (A.67)$$

The solution is found by making use of (106):

$$x \left[= \frac{Aj}{k} \frac{D}{(D^2+j^2)(D+R)} \right] = \frac{Aj}{k(R^2+j^2)} \left(e^{-R\tau} - \cos j\tau + \frac{R}{j} \sin j\tau \right) \quad \dots \quad (A.68)$$

or, putting for abbreviation

$$\theta = j\tau, \quad R/j = T/2\pi t = s, \quad x^* = A/G, \quad \dots \quad \dots \quad \dots \quad (A.69)$$

in the simpler form

$$x = x^* \frac{s}{1+s^2} (e^{-s\theta} - \cos \theta + s \sin \theta). \quad \dots \quad \dots \quad \dots \quad (A.70)$$

Similarly, the first derivative becomes

$$\frac{dx}{d\tau} = jx^* \frac{s}{1+s^2} (s \cos \theta + \sin \theta - s e^{-s\theta}). \quad \dots \quad (A.71)$$

If the time constant t were $= 0$, i.e., $s = \infty$, we would have to deal with an ordinary proportional gear, and the output x would be simply $x^* \sin j\tau$, with the amplitude x^* . In the general case, the output is not simple harmonic (because of the exponential term in the solution) but after a

sufficiently long time (with $\tau \rightarrow \infty$ and $\theta \rightarrow \infty$) the transient exponential term becomes vanishingly small and we have, with gradually improving accuracy, steady-state oscillations expressed by

$$x \simeq x^* \frac{s}{1+s^2} (s \sin \theta - \cos \theta), \quad \frac{dx}{d\tau} \simeq jx^* \frac{s}{1+s^2} (s \cos \theta + \sin \theta). \quad \dots \quad (A.72)$$

The maxima and minima then occur alternately for an infinite series of values of θ which may be denoted by $\bar{\theta}$ and for which

$$\tan \bar{\theta} = -s, \quad \sin \bar{\theta} = \pm s/\sqrt{1+s^2}, \quad \cos \bar{\theta} = \pm 1/\sqrt{1+s^2}. \quad \dots \quad (A.73)$$

The consecutive values of $\bar{\theta}$ form an arithmetical progression, and we may write $\bar{\theta} = n\pi - \tan^{-1} s$, where $0 < \tan^{-1} s < \frac{1}{2}\pi$, and maxima correspond to odd values of n . The turning values of the input occur when $\theta = n\pi - \frac{1}{2}\pi$, the maxima again corresponding to odd values of n . The phase delay of the output is therefore $\frac{1}{2}\pi - \tan^{-1} s = \tan^{-1} 2\pi t/T$. The steady-state amplitude is

$$\bar{x} = x^* \frac{s}{\sqrt{1+s^2}} = \frac{A}{G\sqrt{1+j^2t^2}} = \frac{A}{k\sqrt{R^2+j^2}}. \quad \dots \quad (A.74)$$

A few illustrative curves of the output, represented conveniently by

$$\frac{x}{\bar{x}} = \frac{1}{\sqrt{1+s^2}} (e^{-s\theta} - \cos \theta + s \sin \theta) \quad \dots \quad (A.75)$$

and including the early transient stage are given in Fig. 5, for several values of $2\pi s$, or T/t . It is seen that, during the transient stage, the minima of x have smaller values than \bar{x} , but the maxima are bigger, the overshoots increasing as s falls. The exact transient turning values x_m occur for the values θ_m satisfying the equation (from A.71)

$$s \cos \theta_m + \sin \theta_m = s e^{-s\theta_m}, \quad \dots \quad (A.76)$$

which can only be solved by trial and error, or other approximate methods, whereupon the turning values themselves, and the corresponding overshoots, may be found from

$$\frac{x_m}{\bar{x}} = \frac{\sqrt{1+s^2}}{s} \sin \theta_m. \quad \dots \quad (A.77)$$

The greatest overshoots occur when $s = 0$, or $R = 0$, in which case the solution is

$$x = \frac{A}{kj} (1 - \cos \theta) = \bar{x}(1 - \cos \theta), \quad \dots \quad (A.78)$$

and the overshoot is obviously 100 per cent. In this particular case our unit becomes a simple integrator; there is a steady oscillation right from the start, but the mean value is \bar{x} , instead of 0.

The inset diagram in Fig. 5 gives the ratio \bar{x}/x^* against $2\pi s$ or T/t (cf. A.74). This graph seems to imply that there is no output when $s = 0$, but in this case, with k finite, we have $x^* = \infty$, $\bar{x} = A/kj$.

The reader may consider the analogous case when the input is proportional to $\cos j\tau$, instead of $\sin j\tau$. He will find similar results, except that the overshoots are practically negligible.

Example 9.—Determine the response of an undercritically damped oscillator (complex delay unit) to a step input, and find the maximum output overshoot over its final steady value. Also determine the response of a system consisting of two such oscillators in series to a step input, and find whether the overshoot in such a system may be greater than in the case of a single oscillator.

For a single oscillator we have

$$\frac{d^2x}{d\tau^2} + 2R \frac{dx}{d\tau} + Hx = AH, \quad \dots \quad (A.79)$$

where $H - R^2 = J^2 > 0$, J is the natural frequency of the oscillator, R its damping factor, and A denotes the final steady output. By using formula (80) or (100), the response is obtained in the form

$$\frac{x}{A} \left[= \frac{H}{D^2 + 2RD + H} \right] = 1 - \left(\cos J\tau + \frac{R}{J} \sin J\tau \right) e^{-R\tau}, \quad \dots \quad \dots \quad \dots \quad (A.80)$$

and the derivative

$$\frac{1}{A} \frac{dx}{d\tau} = \frac{H}{J} e^{-R\tau} \sin J\tau. \quad \dots \quad \dots \quad \dots \quad \dots \quad \dots \quad (A.81)$$

The turning values occur at $J\tau_n = n\pi$ (where $n = 1, 2, 3, \dots$) and are

$$\frac{x_n}{A} = 1 + (-1)^{n-1} e^{-n\pi R/J}. \quad \dots \quad \dots \quad \dots \quad \dots \quad \dots \quad (A.82)$$

The maximum overshoot (for $n = 1$) is

$$\frac{x_{\max}}{A} - 1 = e^{-\pi R/J}. \quad \dots \quad \dots \quad \dots \quad \dots \quad \dots \quad (A.82a)$$

A specimen response curve (for $R/J = 0.2$, $H/J^2 = 1.04$) is traced in Fig. 6a, the overshoot being 53.4 per cent. Fig. 6b gives the graph of the percentage overshoot against the ratio R/J , the greatest value being 100 per cent for $R = 0$. The overshoot decreases rapidly when R/J rises, and becomes only 4.3 per cent for $R/J = 1$. Beyond that value, the overshoot becomes practically negligible and it disappears completely for $R/J = \infty$, i.e., $J = 0$, $H = R^2$ (the case of critical damping). In this particular case, we obtain, using formula (40),

$$\frac{x}{A} \left[= \frac{R^2}{(D + R)^2} \right] = 1 - (1 + R\tau) e^{-R\tau}; \quad \frac{1}{A} \frac{dx}{d\tau} = R^2 \tau e^{-R\tau}, \quad \dots \quad \dots \quad \dots \quad (A.83)$$

and it is seen that the output increases monotonically from 0 to its ultimate steady value. The alternative case of overcritical damping (when $H < R^2$ and the transfer function $D^2 + 2RD + H$ has two real roots, say $-r_1$ and $-r_2$) is also easily solved by means of formula (97) :

$$\frac{x}{a} \left[= \frac{r_1 r_2}{(D + r_1)(D + r_2)} \right] = 1 + \frac{r_2 e^{-r_1 \tau} - r_1 e^{-r_2 \tau}}{r_1 - r_2}; \quad \frac{1}{A} \frac{dx}{d\tau} = \frac{r_1 r_2}{r_1 - r_2} (e^{-r_2 \tau} - e^{-r_1 \tau}), \quad (A.84)$$

and the output is seen again to increase monotonically, with no overshoot.

The above simple problem is well known and has various applications. In particular, its solution represents the rise of incidence (or normal acceleration) of an aircraft, following a sudden elevator displacement.

Let us suppose now that the output of the oscillator is fed as an input into another similar oscillator, with an analogous transfer function $(D^2 + 2rD + h)$, the constants r , h differing, in general, from R , H . We have then two oscillators in series, and the final output (obviously independent of the order in which the two oscillators follow each other) will be given by the following operational formula :

$$\frac{x}{A} \left[= \frac{Hh}{(D^2 + 2RD + H)(D^2 + 2rD + h)} \right] \quad (A \text{ is final steady output}) \quad \dots \quad \dots \quad (A.85)$$

The solution is obtained directly from formula (126) :

$$\left. \begin{aligned} \frac{x}{A} &= 1 + \frac{h}{Q} \left(a \cos J\tau + \frac{b}{J} \sin J\tau \right) e^{-R\tau} + \frac{H}{Q} \left(a' \cos j\tau + \frac{b'}{j} \sin j\tau \right) e^{-r\tau}, \\ \text{where:} & \\ a &= H - h - 4R(R - r), \quad b = R(H - h) + 2(R - r)(H - 2R^2), \\ a' &= h - H + 4r(R - r), \quad b' = r(h - H) - 2(R - r)(h - 2r^2), \\ Q &= (H - h)^2 + 4(R - r)(Rh - rH) \end{aligned} \right\} \quad \dots \quad \dots \quad (A.86)$$

The solution of (A.90) is obtained immediately by using formulae (135) and (110):

$$x \left[= \frac{2A}{\tau_1^2} \frac{\tau_1 D - 1}{D^2(D^2 + J^2)} \right] = \frac{x^*}{\theta_1^2} [(1 - \cos \theta) + \theta_1(\theta - \sin \theta) - \frac{1}{2}\theta^2], \quad \dots \quad \dots \quad \text{(A.92)}$$

$$v = \frac{dx}{d\tau} \left[= \frac{2A}{\tau_1^2} \frac{\tau_1 D - 1}{D(D^2 + J^2)} \right] = \frac{Jx^*}{\theta_1^2} [\theta_1(1 - \cos \theta) - (\theta - \sin \theta)], \quad \dots \quad \dots \quad \text{(A.92a)}$$

where, for abbreviation,

$$\theta = J\tau, \quad \theta_1 = J\tau_1. \quad \dots \quad \dots \quad \dots \quad \text{(A.93)}$$

It may be noticed that, for $\tau = 0$ (hence $\theta = 0$) both x and v are 0. The next interesting point is to find the values of x and v at the end of the input, *i.e.*, for $\tau_e = 2\tau_1$, $\theta_e = 2\theta_1$:

$$x_e = 2x^* \frac{\sin \theta_1(\sin \theta_1 - \theta_1 \cos \theta_1)}{\theta_1^2} \quad \dots \quad \dots \quad \dots \quad \text{(A.94)}$$

$$v_e = 2Jx^* \frac{\cos \theta_1(\sin \theta_1 - \theta_1 \cos \theta_1)}{\theta_1^2}. \quad \dots \quad \dots \quad \dots \quad \text{(A.94a)}$$

Once the input has ceased, *i.e.*, for $\theta > 2\theta_1$, the differential equation for x is simply

$$\frac{d^2x}{d\tau^2} + J^2x = 0 \quad (\tau > 2\tau_1) \text{ with } \left. \begin{matrix} x = x_e \\ v = v_e \end{matrix} \right\} \text{ at } \tau = 2\tau_1 \quad \dots \quad \dots \quad \text{(A.95)}$$

or, in operational form,

$$(D^2 + J^2)x = D^2x_e + Dv_e \quad \dots \quad \dots \quad \dots \quad \dots \quad \text{(A.95a)}$$

and the solution becomes (*cf.* formulae 15, 19, 99)

$$x = x_e \cos(\theta - \theta_e) + \frac{v_e}{J} \sin(\theta - \theta_e) \quad \dots \quad \dots \quad \dots \quad \text{(A.96)}$$

or substituting (A.94, A.94a) and simplifying,

$$x = 2x^* \frac{\sin \theta_1 - \theta_1 \cos \theta_1}{\theta_1^2} \sin(\theta - \theta_1) \quad (\theta \geq 2\theta_1). \quad \dots \quad \text{(A.96a)}$$

The motion is obviously harmonic, with the amplitude

$$\bar{x} = 2x^* \left| \frac{\sin \theta_1 - \theta_1 \cos \theta_1}{\theta_1^2} \right|. \quad \dots \quad \dots \quad \dots \quad \text{(A.97)}$$

We may observe now that the form of the response (apart from scale), both for the duration of the input and after, depends on one parameter only,

$$\theta_1 = J\tau_1 = 2\pi \tau_1/T, \quad \dots \quad \dots \quad \dots \quad \dots \quad \text{(A.98)}$$

proportional to the ratio of time constants τ_1 and T .

A remarkable feature of the present problem is that the steady amplitude (A.97) may sometimes become nil, *i.e.*, that the output may stop simultaneously with the input. This will happen, in fact, for an infinite number of values of θ_1 , *viz.*, those satisfying the equation

$$\sin \theta_1 - \theta_1 \cos \theta_1 = 0, \text{ or } \tan \theta_1 = \theta_1. \quad \dots \quad \dots \quad \dots \quad \dots \quad \text{(A.99)}$$

It is so because the expression $(\sin \theta_1 - \theta_1 \cos \theta_1)$ happens to be a common factor of formulae for x_e and v_e (see A.94 and A.94a)†. The well-known equation (A.99), which we have encountered already in example 9 formula (A.88) has an infinite number of solutions:

$$\theta_1 = \frac{3}{2}\pi - 0.219 = 4.493,$$

or
$$\frac{5}{2}\pi - 0.129 = 7.725,$$

or
$$\frac{7}{2}\pi - 0.092 = 10.904, \text{ etc.},$$

the subsequent solutions being slightly smaller than, but differing less and less from, $9\pi/2, 11\pi/2,$ etc.

In Fig. 7a, several sample response curves (for some chosen values of θ_1) have been traced, the ordinate x/x^* being plotted against θ . The thick parts of all curves correspond to (A.92) and the thin ones to (A.96), the points of junction marking the end of the input in each case. Small values of θ_1 (e.g., $\pi/4, \pi/2$) apply when the duration of input $2\tau_1$ is only a fraction of the natural period T of the oscillator. With large values of θ_1 (e.g., 10 or 15), the input lasts over several periods, and this results in several oscillations of the thick parts of the curves. The curve corresponding to $\theta_1 = \pi/2$ is an example of a case in which $v_e = 0$ but $x_e \simeq 0$, so that $\bar{x} = x_e$, and the point of junction gives a turning value. Finally, the curve corresponding to $\theta_1 = 4.493$ is the simplest example of the output stopping simultaneously with the input. It may be noticed that all maxima of x/x^* within the duration of input are less than 1 (although some are near enough to 1), and both maxima and minima are positive; x_e may, however, be either positive or negative and, of course, the subsequent turning values are alternatively $(+\bar{x})$ and $(-\bar{x})$.

It remains to find a general way to determine the positions and values of the maxima and minima during the transient stage. Denoting by $\theta_m = J\tau_m$ the relevant values of θ , the equation for θ_m is obtained by making (A.92a) equal to zero, i.e.,

$$\theta_1(1 - \cos \theta_m) - (\theta_m - \sin \theta_m) = 0 \dots \dots \dots \text{(A.100)}$$

For a given θ_1 , this equation can only be solved by approximate methods. The best way, however, is to write it in the form

$$\theta_1 = \frac{\theta_m - \sin \theta_m}{1 - \cos \theta_m}, \dots \dots \dots \text{(A.100a)}$$

and plot θ_1 against θ_m , as shown in Fig. 7b. It is seen that only one θ_1 corresponds to each θ_m , but the inverse is not true. For a given θ_1 there may be one, or three, five, seven values of θ_m , etc., their number increasing as θ_1 increases. The minima of the curves in Fig. 7b are easily found to lie on the straight line $\theta_m = 2\theta_1$ and satisfy (A.99)‡. As obviously θ_m must be $\leq 2\theta_1$, it follows that the minute arcs of the curve below that straight line do not give any real turning values and should be considered as meaningless.

Substituting (A.100a) into (A.92), we obtain, after some considerable simplification, the following formula for turning values of x :

$$x_m = 2x^* \left(\frac{1 - \cos \theta_m - \frac{1}{2}\theta_m \sin \theta_m}{\theta_m - \sin \theta_m} \right)^2, \dots \dots \dots \text{(A.101)}$$

and this confirms, in a general way, that all transient maxima and minima must be positive.

† It may be noticed that x_e (but not v_e) becomes 0 also when $\sin \theta_1 = 0$, and v_e (but not x_e) becomes 0 when $\cos \theta_1 = 0$; in both cases the response continues indefinitely after the input has ceased.

‡ Of two other straight lines marked in Fig. 7b, the one $\theta_m = 3\theta_1$ is tangent at the origin, and that $\theta_m = \theta_1$ (corresponding to $\tan \theta_m/2 = \theta_m/2$) intersects the curve at points for which the output attains a turning value when the input is maximum.

To complete the illustration of this example (rather more complicated than the preceding ones), Fig. 8a presents graphs of x_e/x^* and \bar{x}/x^* according to (A.94) and (A.97) respectively, and Fig. 8b graphs of the few transient turning values x_m/x^* calculated from (A.100a) and (A.101). The abscissa is θ_1 in all cases. As regards Fig. 8b, it should be mentioned that, for $\theta_1 < \pi/2$ the output has no maximum in the transient region (cf. Fig. 7a). As θ_1 increases, more and more turning values make their appearance, but the illustration does not go beyond the third maximum.

Example 11.—Determine the response of a simple oscillator, with any amount of damping, to an instantaneous pulse (Dirac's pulse, or delta-function input). Find the maximum output.

It may not be superfluous to recollect the definition of Dirac's pulse. Suppose any dynamic system is subject to a step input of magnitude a at $\tau = 0$, and the response is represented by $af(\tau)$. If a subsequent negative step input of magnitude $(-a)$ is applied at $\tau = \tau_1$, then the final response, from τ_1 onwards, will be

$$af(\tau) - af(\tau - \tau_1) = a\tau_1 \frac{f(\tau) - f(\tau - \tau_1)}{\tau_1} \quad \dots \quad \dots \quad \dots \quad \dots \quad (A.102)$$

Let us now suppose that τ_1 decreases while a increases, in such a way that $a\tau_1 = \text{const} = A$, say, so that the total impulse is constant, while its duration becomes smaller and ultimately tends to 0. In the limiting case the response becomes

$$F(\tau) = Af'(\tau) \quad (\tau > 0) \quad \dots \quad \dots \quad \dots \quad \dots \quad \dots \quad (A.103)$$

Hence the operational equivalent of such an input is AD . A finite impulse of strictly zero duration is, of course, physically impossible. Nevertheless, $F(\tau)$ represents, with a fair approximation, the response to a 'rectangular' impulse of magnitude A , of very short duration.

In the case of an oscillator, the subsidiary equation will be

$$k(D^2 + 2RD + H)x = AD, \quad \dots \quad \dots \quad \dots \quad \dots \quad \dots \quad \dots \quad (A.104)$$

k being an arbitrary constant factor. We have to consider five cases :

(a) Undercritical damping: $H - R^2 = J^2 > 0$, the solution being from (100) or (81, 82):

$$x = \frac{A}{kJ} e^{-R\tau} \sin J\tau; \quad \frac{dx}{d\tau} = \frac{A}{k} \left(\cos J\tau - \frac{R}{J} \sin J\tau \right) e^{-R\tau} \quad \dots \quad \dots \quad \dots \quad \dots \quad (A.105)$$

There are an infinite number of turning values, and the first (and highest) maximum occurs at τ_m , where $J\tau_m = \tan^{-1} J/R$, $\sin J\tau_m = J/\sqrt{H}$, so that

$$x_{\max} = \frac{A}{k\sqrt{H}} e^{-(R/J)\tan^{-1}(J/R)} \quad \dots \quad \dots \quad \dots \quad \dots \quad \dots \quad (A.106)$$

(b) Supercritical damping: $H - R^2 < 0$. We have then

$$\left. \begin{aligned} D^2 + 2RD + H &= (D + r_1)(D + r_2), \\ \text{where} \quad r_1 &= R + \sqrt{(R^2 - H)}, \quad r_2 = R - \sqrt{(R^2 - H)}, \\ r_1 + r_2 &= 2R, \quad r_1 r_2 = H \end{aligned} \right\} \dots \quad \dots \quad \dots \quad \dots \quad (A.107)$$

and the solution is, from (97),

$$\left. \begin{aligned} x \left[= \frac{A}{k} \frac{D}{(D + r_1)(D + r_2)} \right] &= \frac{A}{k(r_1 - r_2)} (e^{-r_2\tau} - e^{-r_1\tau}), \\ \frac{dx}{d\tau} &= \frac{A}{k(r_1 - r_2)} (r_1 e^{-r_1\tau} - r_2 e^{-r_2\tau}) \end{aligned} \right\} \dots \quad \dots \quad \dots \quad \dots \quad (A.108)$$

(i) In the first case we apply formula (142) of Table 4, with $R = 2$, $H = 5$, $r = 1$, $a = 2$, $b = 13$, $c = 39$, $d = 59$, $f = 37$, $g = 2$, and we obtain $c_1 = 2$, $c_2 = 2$, $b_2 = 3$, $a_2 = 1$, $a_1 = 1$, $b_1 = 1$, so that

$$\varphi_1(D) = \frac{D^2 + D + 2}{D^2 + 4D + 5} + \frac{D}{D + 1} + \frac{3D}{(D + 1)^2} + \frac{2D}{(D + 1)^3}, \dots \dots \dots \text{(A.115)}$$

a direct check being easy. Using now formulae (100) and (8, 9, 10), we get

$$F_1(\tau) = \frac{2}{5} + \left(\frac{3}{5} \cos \tau - \frac{9}{5} \sin \tau \right) e^{-2\tau} + (1 + 3\tau + \tau^2) e^{-\tau}. \dots \dots \dots \text{(A.116)}$$

(ii) In the second case we apply formula (151) of Table 5, with $a = 3$, $b = 7$, $c = 12$, $d = 17$, $f = 14$, $g = 9$, $k = 2$, $R = 1$, $H = 2$, $B = 1$, $C = 2$, $E = 3$, $F = 1$, and we obtain $A = 12$, $\alpha = 4$, $\beta = 10$, $\gamma = 8$, $\delta = 3$, $\theta = -1$, $\Gamma = -5/2$, $K = -2$, and hence $a_1 = 2$, $b_1 = 1$, $a_2 = 1$, $b_2 = 2$, $f_2 = 1$, $c_2 = 1$, $d_2 = 3$, so that

$$\varphi_2(D) = \frac{2D^2 + D}{D^2 + 2D + 2} + \frac{D^4 + 2D^3 + D^2 + 3D + 1}{D^4 + D^3 + 2D^2 + 3D + 1}, \dots \dots \dots \text{(A.117)}$$

a direct check being again simple. It remains to factorise the quartic denominator,

$$D^4 + D^3 + 2D^2 + 3D + 1 = (D + 1)(D + 0.4534)(D^2 - 0.4534D + 2.066) \dots \text{(A.118)}$$

and to use (100) and (121), and the solution is

$$F_2(\tau) = (2 \cos \tau - \sin \tau) e^{-\tau} + 1 - e^{-\tau} \\ + 0.4606e^{-0.4534\tau} + (0.5396 \cos 2.1949\tau + 0.0395 \sin 2.1949\tau)e^{0.2267\tau}. \dots \text{(A.119)}$$

(iii) In the third case we apply formula (152) of Table 5, with $R = 3$, $r = 1$, $a = 5$, $b = 60$, $c = 285$, $d = 675$, $f = 836$, $g = 477$, $k = 54$, and we obtain $A = 2$, $a_1 = 1$, $b_1 = 2$, $c_1 = 3$, $a_2 = 2$, $b_2 = 3$, $c_2 = 4$, so that

$$\varphi_3(D) = 2 + \frac{D}{D + 3} + \frac{2D}{(D + 3)^2} + \frac{3D}{(D + 3)^3} + \frac{2D}{D + 1} + \frac{3D}{(D + 1)^2} + \frac{4D}{(D + 1)^3} \text{(A.120)}$$

and, using (8, 9, 10) twice, we get the final answer:

$$F_3(\tau) = 2 + \left(1 + 2\tau + \frac{3}{2}\tau^2 \right) e^{-3\tau} + (2 + 3\tau + 2\tau^2) e^{-\tau}. \dots \dots \dots \text{(A.121)}$$

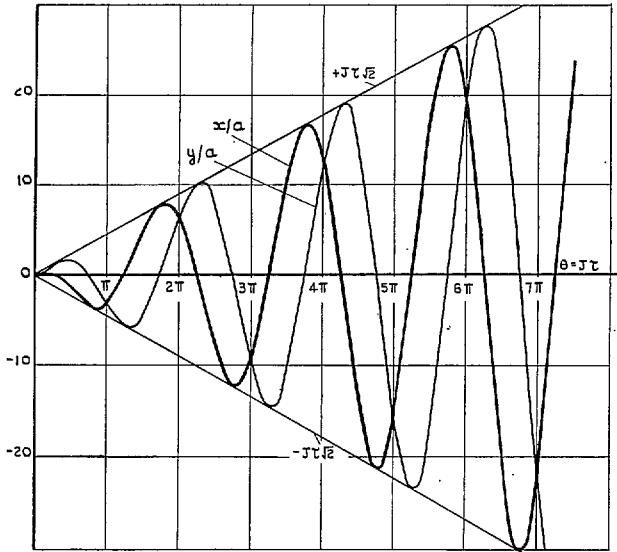


FIG. 1. Solution of example 3.

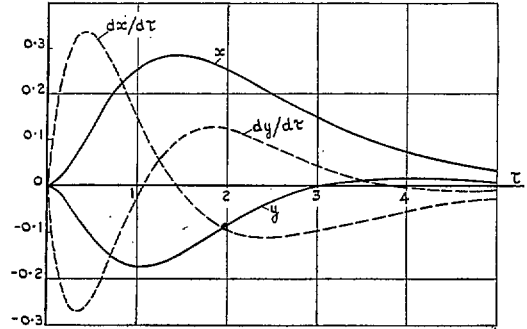
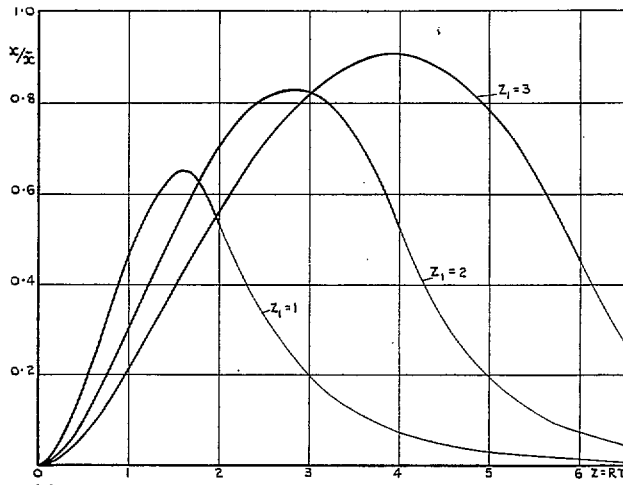
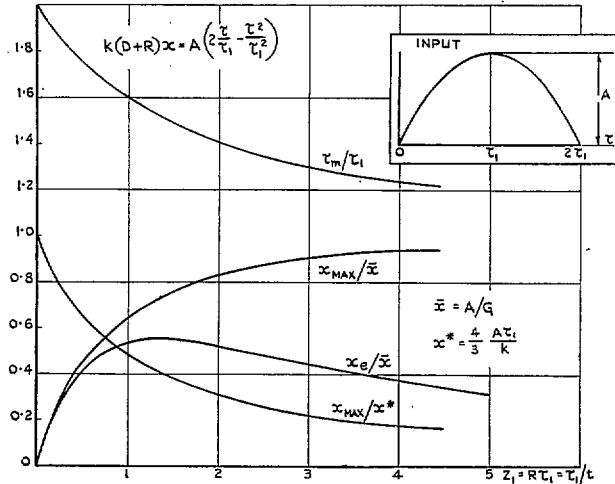


FIG. 2. Solution of example 4.

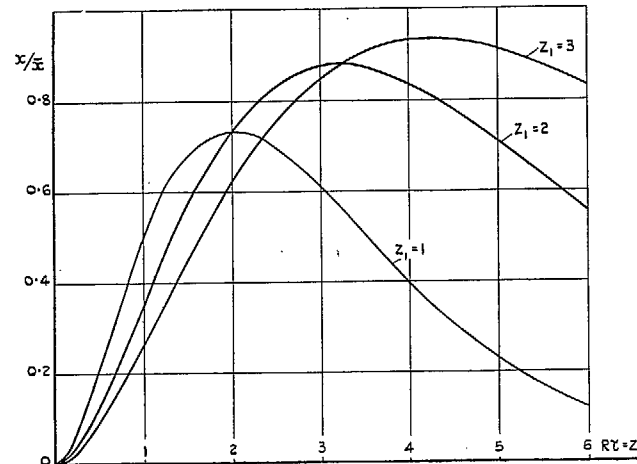


(a). SAMPLE RESPONSE CURVES.



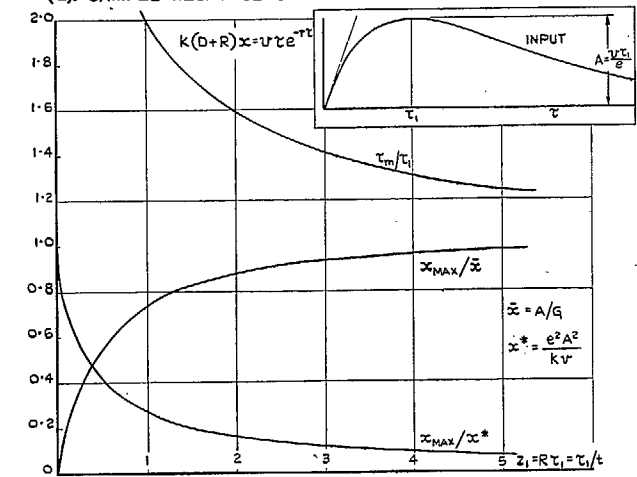
(b). GENERAL CHARACTERISTICS OF RESPONSE.

FIGS. 3a and 3b. Response of simple delay unit to a parabolic input of finite duration (example 6).



(a). SAMPLE RESPONSE CURVES.

46



(b). GENERAL CHARACTERISTICS OF RESPONSE.

FIGS. 4a and 4b. Response of a simple delay unit to an input proportional to $\tau e^{-r\tau}$ (example 7).

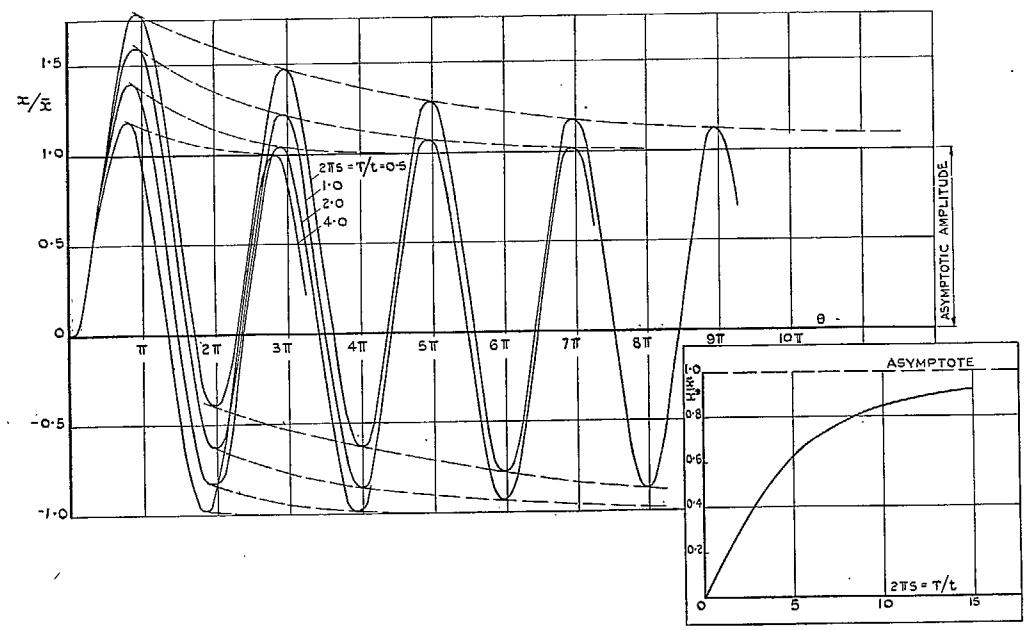


FIG. 5. Transient response of a simple delay unit to a sinusoidal input—Sample curves (example 8). (Inset: Variation of the steady amplitude with the ratio of time constants.)

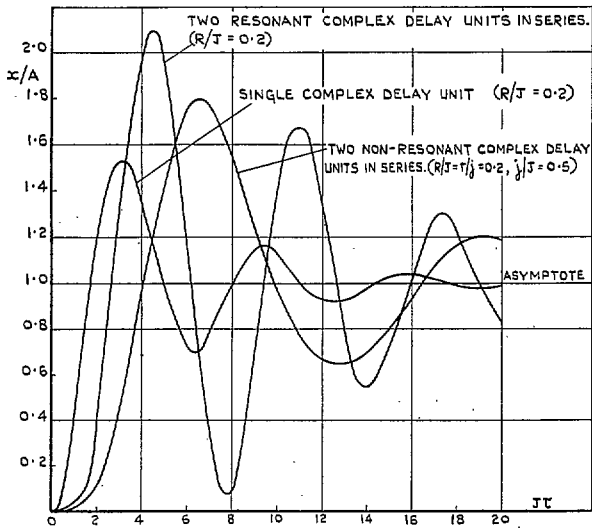


FIG. 6a. Response to a step input into damped oscillatory systems (complex delay units) in series, compared to the case of a single unit (example 9).

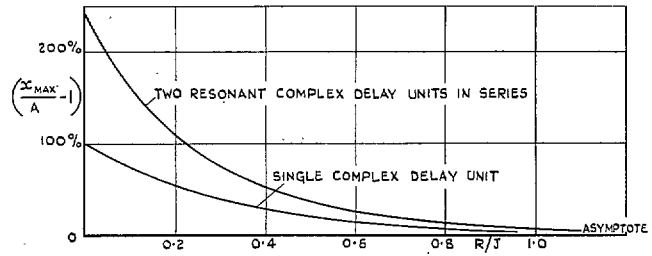
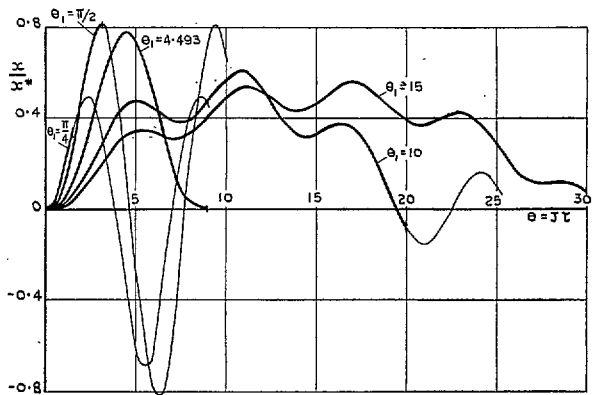
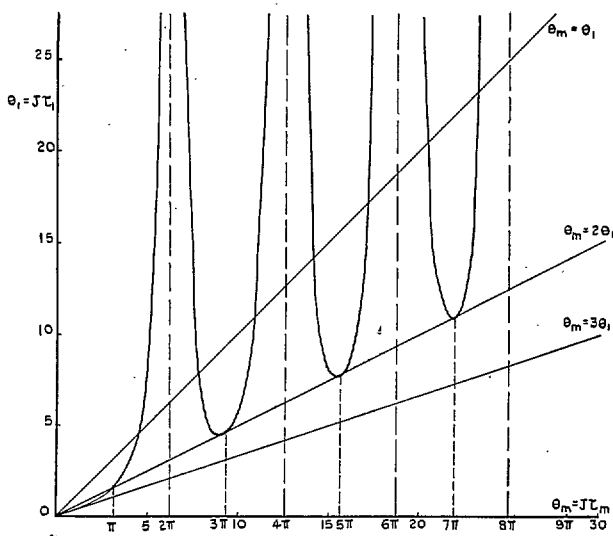


FIG. 6b. Maximum overshoot in the case of a step input into two resonant complex delay units in series, compared with that corresponding to a single unit (example 9).

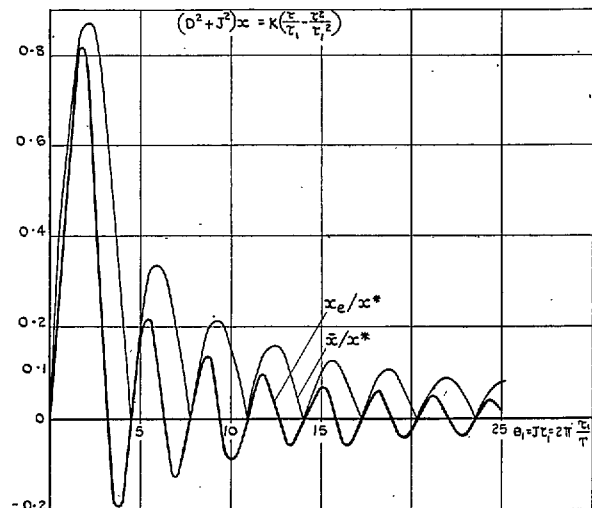


(a). SAMPLE RESPONSE CURVES.

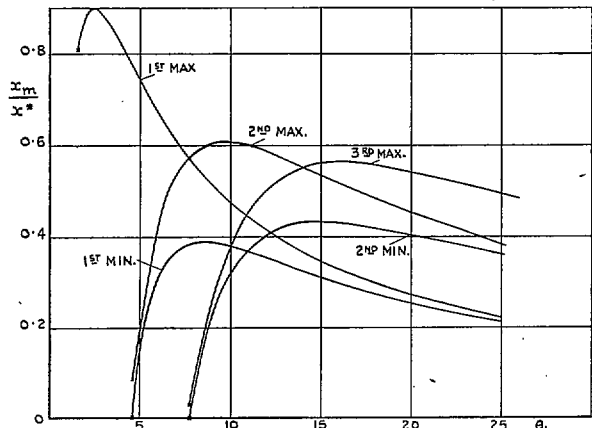


(b). GRAPH FOR DETERMINING POSITION OF TRANSIENT TURNING VALUES.

FIGS. 7a and 7b. Response of an undamped oscillator to a finite parabolic input (example 10).

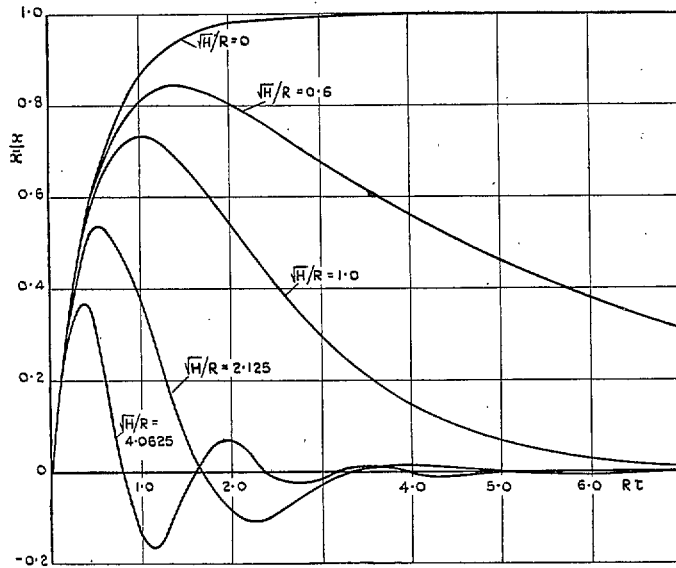


(a). END VALUE OF TRANSIENT OUTPUT AND FINAL STEADY AMPLITUDE AGAINST PARAMETER θ_1 .

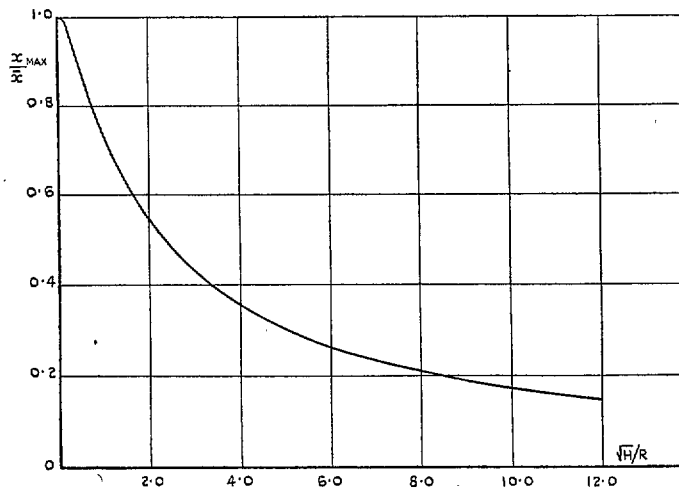


(b). GRAPH OF FIRST FEW TRANSIENT TURNING VALUES.

FIGS. 8a and 8b. Response of an undamped oscillator to a finite parabolic input (example 10).



(a). SAMPLE RESPONSE CURVES.



(b). MAXIMUM OUTPUT DISPLACEMENT.

FIGS. 9a and 9b. Response of a damped oscillator to an instantaneous pulse (example 11).

Publications of the Aeronautical Research Council

ANNUAL TECHNICAL REPORTS OF THE AERONAUTICAL RESEARCH COUNCIL (BOUND VOLUMES)

- 1939 Vol. I. Aerodynamics General, Performance, Airscrews, Engines. 50s. (52s.).
Vol. II. Stability and Control, Flutter and Vibration, Instruments, Structures, Seaplanes, etc. 63s. (65s.)
- 1940 Aero and Hydrodynamics, Aerofoils, Airscrews, Engines, Flutter, Icing, Stability and Control, Structures, and a miscellaneous section. 50s. (52s.)
- 1941 Aero and Hydrodynamics, Aerofoils, Airscrews, Engines, Flutter, Stability and Control, Structures. 63s. (65s.)
- 1942 Vol. I. Aero and Hydrodynamics, Aerofoils, Airscrews, Engines. 75s. (77s.).
Vol. II. Noise, Parachutes, Stability and Control, Structures, Vibration, Wind Tunnels. 47s. 6d. (49s. 6d.)
- 1943 Vol. I. Aerodynamics, Aerofoils, Airscrews. 80s. (82s.).
Vol. II. Engines, Flutter, Materials, Parachutes, Performance, Stability and Control, Structures. 90s. (92s. 9d.)
- 1944 Vol. I. Aero and Hydrodynamics, Aerofoils, Aircraft, Airscrews, Controls. 84s. (86s. 6d.).
Vol. II. Flutter and Vibration, Materials, Miscellaneous, Navigation, Parachutes, Performance, Plates and Panels, Stability, Structures, Test Equipment, Wind Tunnels. 84s. (86s. 6d.)
- 1945 Vol. I. Aero and Hydrodynamics, Aerofoils. 130s. (132s. 9d.).
Vol. II. Aircraft, Airscrews, Controls. 130s. (132s. 9d.).
Vol. III. Flutter and Vibration, Instruments, Miscellaneous, Parachutes, Plates and Panels, Propulsion. 130s. (132s. 6d.).
Vol. IV. Stability, Structures, Wind Tunnels, Wind Tunnel Technique. 130s. (132s. 6d.)

Annual Reports of the Aeronautical Research Council—

1937 2s. (2s. 2d.) 1938 1s. 6d. (1s. 8d.) 1939-48 3s. (3s. 5d.)

Index to all Reports and Memoranda published in the Annual Technical Reports, and separately—

April, 1950 - - - R. & M. 2600 2s. 6d. (2s. 10d.)

Author Index to all Reports and Memoranda of the Aeronautical Research Council—

1909—January, 1954 R. & M. No. 2570 15s. (15s. 8d.)

Indexes to the Technical Reports of the Aeronautical Research Council—

December 1, 1936—June 30, 1939	R. & M. No. 1850 1s. 3d. (1s. 5d.)
July 1, 1939—June 30, 1945	R. & M. No. 1950 1s. (1s. 2d.)
July 1, 1945—June 30, 1946	R. & M. No. 2050 1s. (1s. 2d.)
July 1, 1946—December 31, 1946	R. & M. No. 2150 1s. 3d. (1s. 5d.)
January 1, 1947—June 30, 1947	R. & M. No. 2250 1s. 3d. (1s. 5d.)

Published Reports and Memoranda of the Aeronautical Research Council—

Between Nos. 2251-2349	R. & M. No. 2350 1s. 9d. (1s. 11d.)
Between Nos. 2351-2449	R. & M. No. 2450 2s. (2s. 2d.)
Between Nos. 2451-2549	R. & M. No. 2550 2s. 6d. (2s. 10d.)
Between Nos. 2551-2649	R. & M. No. 2650 2s. 6d. (2s. 10d.)
Between Nos. 2651-2749	R. & M. No. 2750 2s. 6d. (2s. 10d.)

Prices in brackets include postage

HER MAJESTY'S STATIONERY OFFICE

York House, Kingsway, London W.C.2; 423 Oxford Street, London W.1; 13a Castle Street, Edinburgh 2; 39 King Street, Manchester 2; 2 Edmund Street, Birmingham 3; 109 St. Mary Street, Cardiff; Tower Lane, Bristol 1; 80 Chichester Street, Belfast, or through any bookseller.